



INDUSTRIAL ---

SNOWPLOWS WITH HYDRAULIC WINGS



www.shoule.com 1 888 • 404 • 4380

**BUILT TO
LAST**

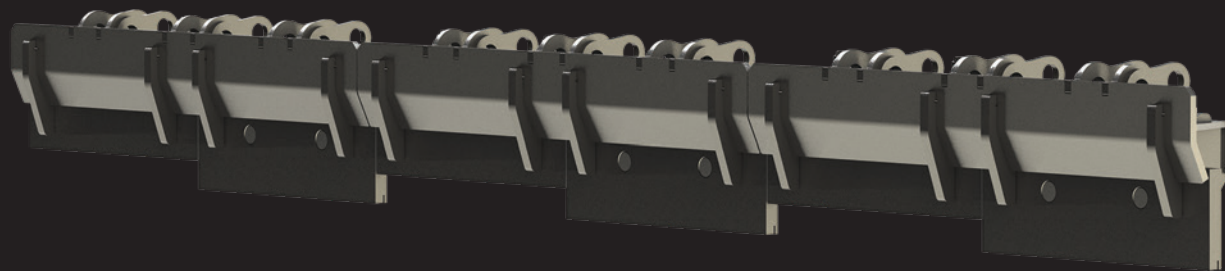


SHoule builds effective snowplows, but also especially the sturdiest on the market, to meet the requirements of today's powerful equipments.

Prototypes are tested over many months before being marketed. They are subjected to rigorous stress tests and analyzed in great detail. This enables us to optimize parts that are subject to heavy loads.

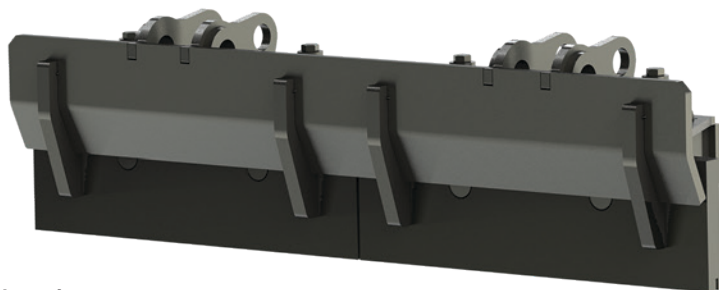
Built from the highest grade steel in the industry, our snowplows are reinforced at multiple points for maximum efficiency. By creating superior inertia, the plow can withstand greater impacts while maintaining its momentum to push snow further, even at high speeds.

Floating Cutting Edges Trip System



Our new **FreeEdge** sectional floating cutting edges system allows for closer following of ground contours for the cleanest surface possible, without leaving any traces, thus resulting in less salt consumption for de-icing.

Each trip-action section is comprised of divisions mounted on springs that push the edges to the ground and individually adjust to all ground imperfections encountered.



Isolated section

In idle position, the cutting edge sections have a natural angle of 10 degrees toward the front. When the section is tripped when meeting an obstacle, the section swivels backward to an angle of 30 degrees.

The cutting edge sections also have a carbide insertion to increase durability.

All these elements combine to insure maximum snow removal in a single pass.



Durability with minimal maintenance

With its high grade steel construction, UHMW sliders, hardened steel cutting edges up to 3/4" thick (19 mm), spring loaded skid shoes and sturdy hydraulic cylinders, the SHoule Inc. snowplow has been designed to withstand wear and tear.

On top of its one year warranty, our snowplow has the best resale value on the market.

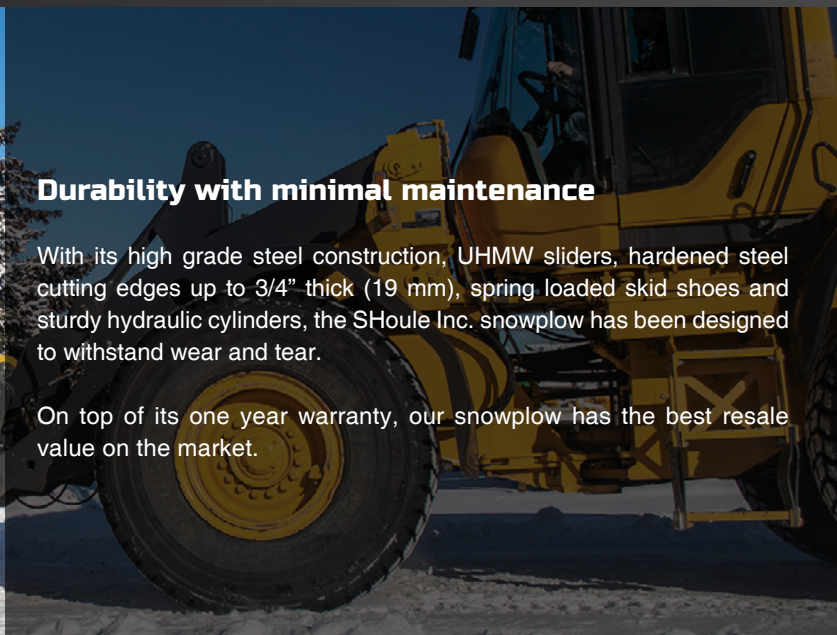


figure 1

High performance

The independant hydraulic wings, combined with the V45 angle system, provide maximum versatility and efficiency (figure 1).

It is also possible to have the doors work in combined action instead of independant operation. (figure 2).

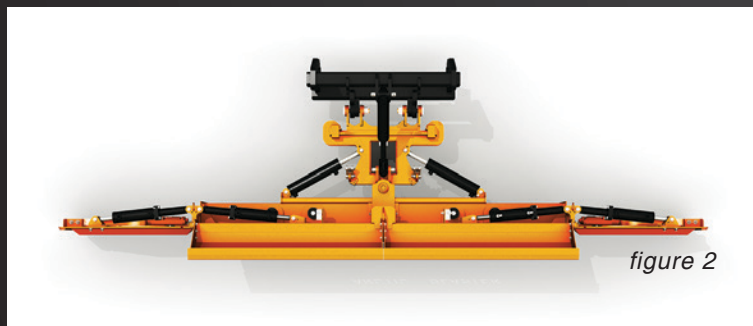
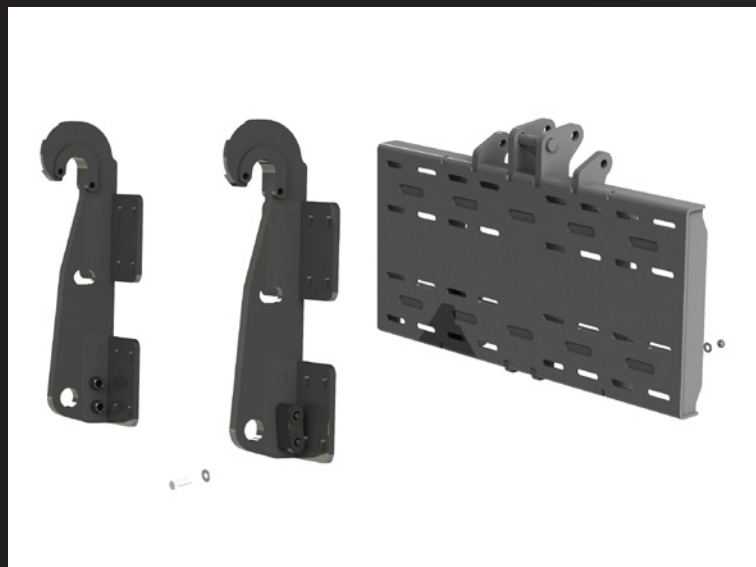


figure 2

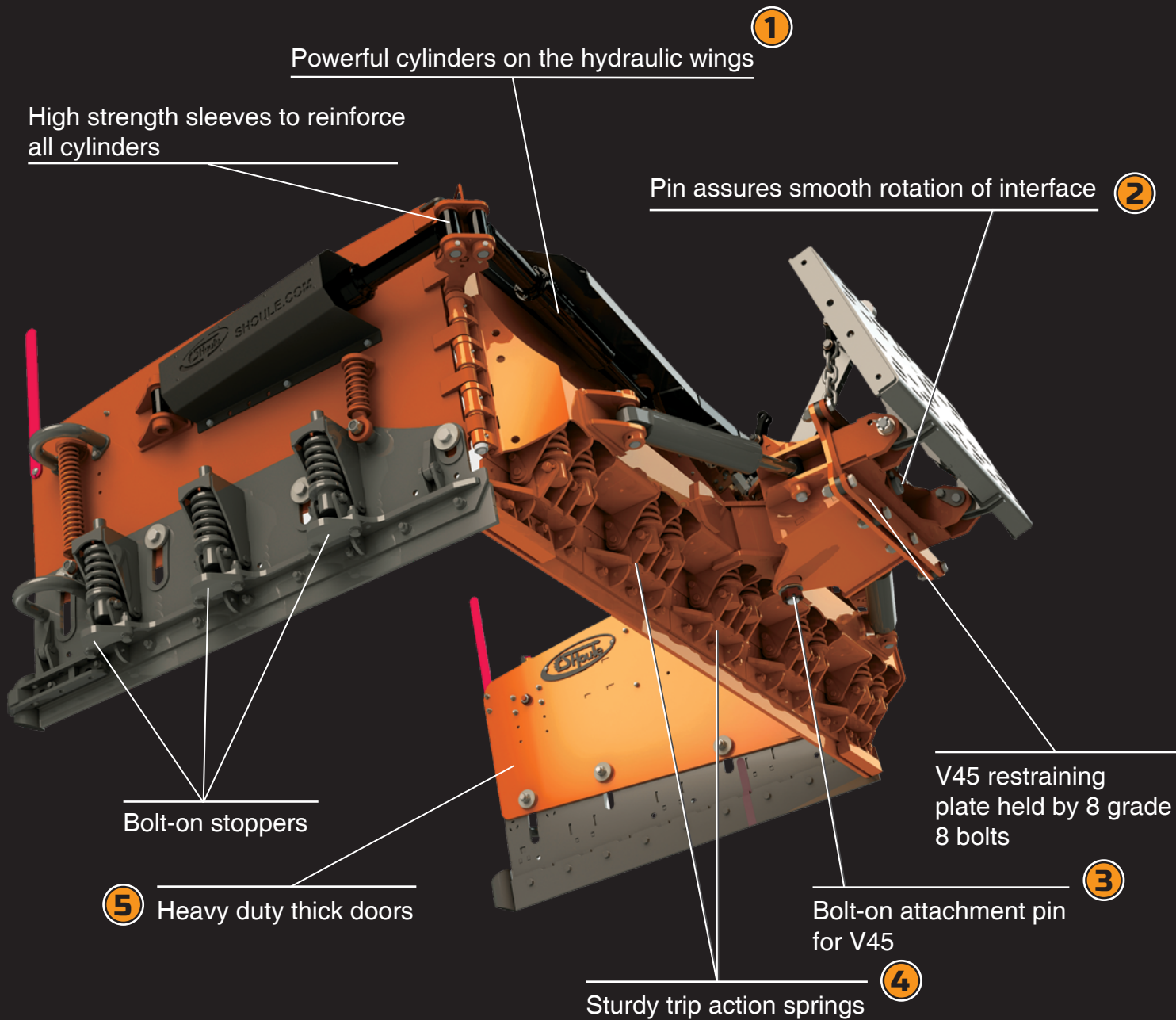


Bolt-on Attachments

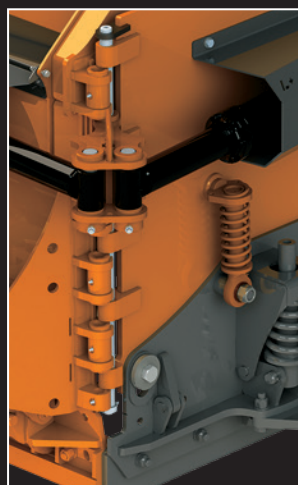
This simplified attachment system is used on new snow blade models.

A slotted universal interface plate is integrated to the very structure of the blade. Specify your loader model to order the appropriate attachment to fix directly to the universal plate.

ADVANTAGES



	C+	S	S+	L	L+	H
1	2 1/2"	2 1/2"	3"	3 1/2"	4"	4"
2	2"	2 1/2"	2 1/2"	2 1/2"	2 1/2"	3"
3	1 1/2"	1 1/2"	1 1/2"	2"	2"	2 1/2"
4	8" x 3 1/2"	10" x 3 1/2"	10" x 3 1/2"	12" x 4 1/2"	12" x 4 1/2"	12" x 4 1/2"
5	3/8"	3/8"	3/8"	1/2"	5/8"	3/4"

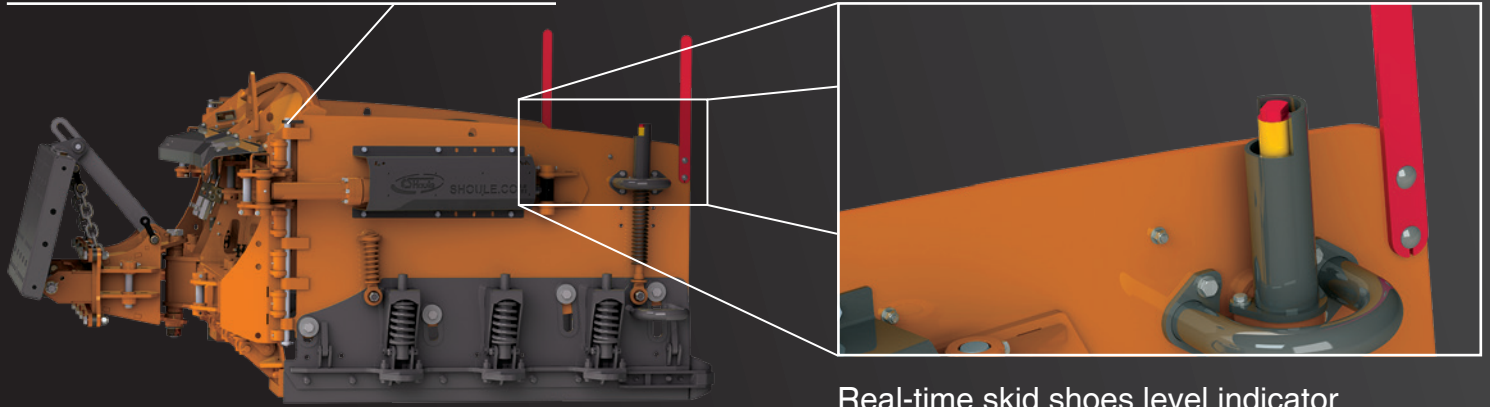


Door axis diameters

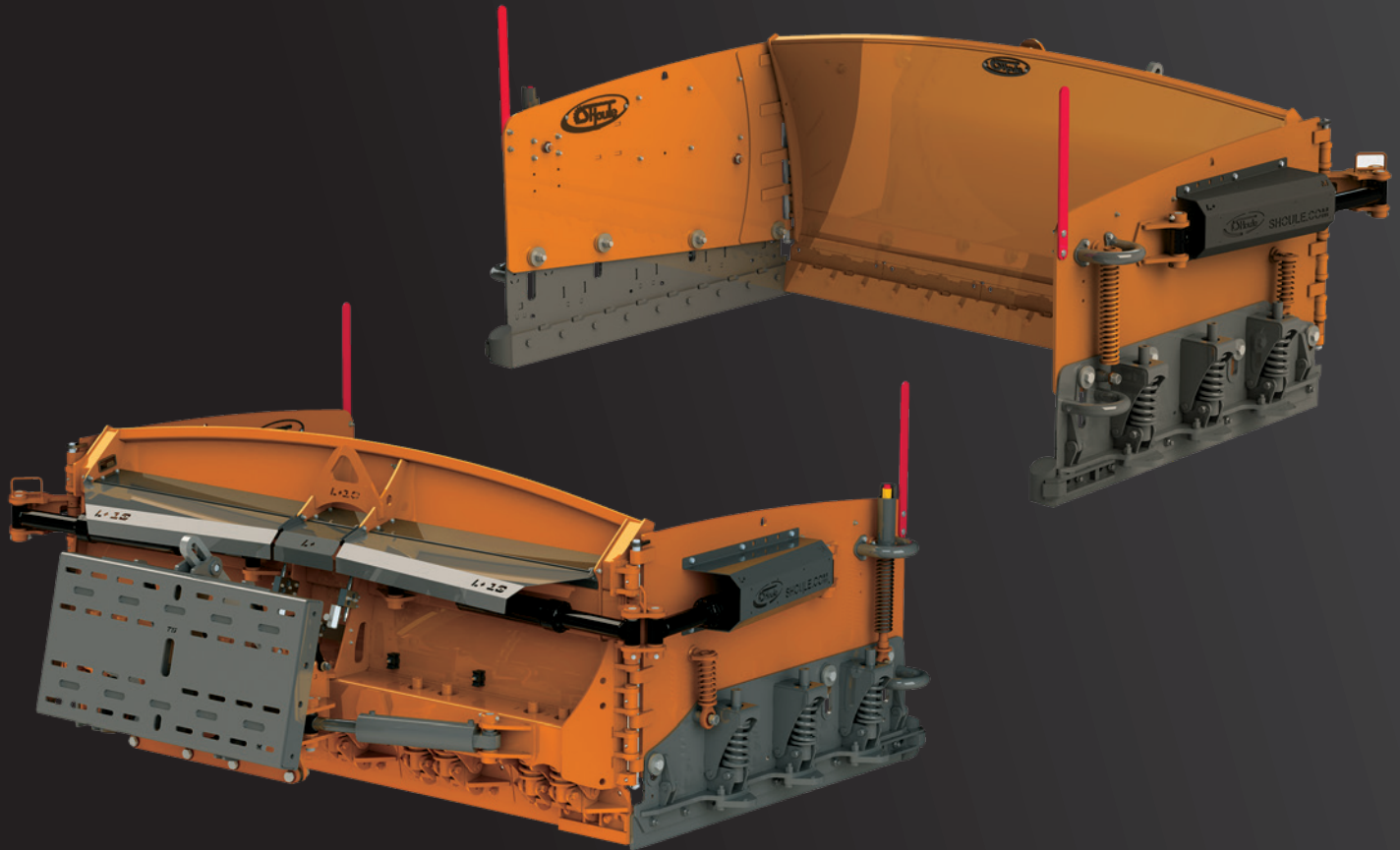
Category C+, S and S+ : 1"
Category L and L+ : 1 1/4"
Category H : 1 3/4"

made of 1045 steel

Retaining pin on hydraulic door hinges



Real-time skid shoes level indicator



- Multiple positions of hydraulic doors for maximum capacity of 180 degrees
- Sturdy T1 steel hydraulic doors
- Lateral wing skid shoes with trip system, adjustable on springs and made of AR400 steel
- V45 angle system
- Lateral swivel to follow the irregularities of the ground
- Universal plate and bolt-on attachments for easy adaptation on new vehicles
- Door reinforcements at strategic locations
- Greasable bushings on bearings
- Joystick included for ease of operation
- **Includes 2x electro-hydraulic valve kits for individual door operation, V45 system, and up/down control - standard**
- Optional additional electro-hydraulic valve kits available



Snowplows with HYDRAULIC WINGS

ARCTIC BLASTER

Snowplow with individual trip-action cutting edges

07 Category **C+**
45 to 60 HP (7000 to 11 000 lb)

10 Category **L**
90 to 150 HP (17 000 to 24 000 lb)

08 Category **S**
60 to 110 HP (11 000 to 15 000 lb)

11 Category **L+**
90 to 185 HP (24 000 to 43 000 lb)

09 Category **S+**
85 to 110 HP (14 000 to 18 000 lb)

12 Category **H**
200 HP and up (43 000 lb and up)

Category C+

For industrial loaders from 50 to 75 HP
(7000 to 11 000 lb)

- /// Lateral door skid shoes with trip system, adjustable on springs, made of 1/2" thick AR400 steel
- /// Sturdy 2 1/2" u-cup hydraulic door cylinders
- /// Two electro-hydraulic valve kits included for independent functions
- /// Joystick included for ease of operation
- /// **Sturdy 6" cutting edges with trip-action system**
- /// 3/8" thick wings



						CONFIGURATION
CLOSED WIDTH	OPEN WIDTH	CENTER HEIGHT	HEIGHT AT SIDES	DOOR LENGTH	WEIGHT	V45
6 ft	12 ft	30 in	26 in	36 in	1 500 lb	✓
7 ft	13 ft	30 in	26 in	36 in	1 610 lb	✓

Category S

For industrial loaders from 75 to 100 HP
(11 000 to 15 000 lb)

- /// Lateral door skid shoes with trip system, adjustable on springs, made of 1/2" thick AR400 steel
- /// Sturdy 2 1/2" u-cup hydraulic door cylinders
- /// Two electro-hydraulic valve kits included for independent functions
- /// Joystick included for ease of operation
- /// **Sturdy 10" cutting edges with individual trip-action system**
- /// 3/8" thick wings



						CONFIGURATION
CLOSED WIDTH	OPEN WIDTH	CENTER HEIGHT	HEIGHT AT SIDES	DOOR LENGTH	WEIGHT	V45
7 ft	14 ft	36 in	32 in	40 in	2 300 lb	✓
8 ft	15 ft	36 in	32 in	40 in	2 600 lb	✓
10 ft	17 ft	36 in	32 in	40 in	2 700 lb	✓

AVAILABLE OPTIONS

FLOATING CUTTING EDGES TRIP SYSTEM
(on 8 and 10 foot snowplows)

FREE EDGE

CARBIDE CUTTING EDGES

Category S+

For industrial loader from 85 to 110 HP
(14 000 to 18 000 lb)

- /// Lateral door skid shoes with trip system, adjustable on springs, made of 1/2" thick AR400 steel
- /// Sturdy 3" u-cup hydraulic door cylinders
- /// Two electro-hydraulic valve kits included for independent functions
- /// Joystick included for ease of operation
- /// **Sturdy 10" cutting edges with individual trip-action system**
- /// 3/8" thick wings



						CONFIGURATION
CLOSED WIDTH	OPEN WIDTH	CENTER HEIGHT	HEIGHT AT SIDES	DOOR LENGTH	WEIGHT	V45
8 ft	16 ft	42 in	38 in	48 in	3 000 lb	✓
10 ft	18 ft	42 in	38 in	48 in	3 350 lb	✓

AVAILABLE OPTIONS

FLOATING CUTTING EDGES TRIP SYSTEM



CARBIDE CUTTING EDGES

Category L

For industrial loaders from 90 to 150 HP
(17 000 to 24 000 lb)

- /// Lateral door skid shoes with trip system, adjustable on springs, made of 3/4" thick AR400 steel
- /// Sturdy 3 1/2" u-cup hydraulic door cylinders
- /// Two electro-hydraulic valve kits included for independent functions
- /// Joystick included for ease of operation
- /// **Sturdy 12" cutting edges with individual trip-action system**
- /// 1/2" thick wings



						CONFIGURATION
CLOSED WIDTH	OPEN WIDTH	CENTER HEIGHT	HEIGHT AT SIDES	DOOR LENGTH	WEIGHT	V45
8 ft	16 t	44 in	40 in	48 in	4 175 lb	✓
8 ft	18 ft	44 in	40 in	64 in	4 250 lb	✓
10 ft	18 ft	44 in	40 in	48 in	4 375 lb	✓
10 ft	20 ft	44 in	40 in	64 in	4 550 lb	✓

AVAILABLE OPTIONS

FLOATING CUTTING EDGES TRIP SYSTEM

FREE
EDGE

CARBIDE CUTTING EDGES

Category L+

For industrial loaders from 90 to 185 HP
(24 000 to 43 000 lb)

- /// Lateral door skid shoes with trip system, adjustable on springs, made of 3/4" thick AR400 steel
- /// Sturdy 4" u-cup hydraulic door cylinders
- /// Two electro-hydraulic valve kits included for independent functions
- /// Joystick included for ease of operation
- /// **Sturdy 12" cutting edges with individual trip-action system**
- /// **5/8" thick wings**



SIDEWALK DOOR

						CONFIGURATION
CLOSED WIDTH	OPEN WIDTH	CENTER HEIGHT	HEIGHT AT SIDES	DOOR LENGTH	WEIGHT	V45
10 ft	20 ft	50 in	46 in	64 in	5 375 lb	✓
10 ft	22 ft	50 in	46 in	72 in	5 600 lb	✓
12 ft	22 ft	50 in	46 in	64 in	5 775 lb	✓
12 ft	24 ft	50 in	46 in	72 in	5 950 lb	✓

AVAILABLE OPTIONS

FLOATING CUTTING EDGES TRIP SYSTEM



CARBIDE CUTTING EDGES

SIDEWALK DOORS

Category H

For industrial loaders from 200 to 250 HP
(45 000 lb and up)

- /// Lateral door skid shoes with trip system, adjustable on springs, made of 3/4" thick AR400 steel
- /// Sturdy 4" u-cup hydraulic door cylinders
- /// Two electro-hydraulic valve kits included for independent functions
- /// Joystick included for ease of operation
- /// Sturdy 12" cutting edges with individual trip-action system
- /// 3/4" thick wings



SIDEWALK DOOR

						CONFIGURATION
CLOSED WIDTH	OPEN WIDTH	CENTER HEIGHT	HEIGHT AT SIDES	DOOR LENGTH	WEIGHT	V45
12 pi	24 ft	60 in	56 in	72 in	7 700 lb	✓
12 pi	28 ft	60 in	56 in	96 in	8 750 lb	✓

AVAILABLE OPTIONS

FLOATING CUTTING EDGES TRIP SYSTEM

FREEEDGE

CARBIDE CUTTING EDGES

SIDEWALK DOORS

C+ 30" height



S 36" height



S+ 42" height



L 44" height



L+ 50" height



H 60" height









Nothing compares...

Designer expertise combined with field experience. Twenty-five years of finesse and unstoppable strength. The best value package on the market.

That's why they're preferred by the biggest names in the industry and why they continue to grow in popularity.

You'll be looking forward to the storm of the century!

www.shoule.com | 1 888 ■ 404 ■ 4380



www.facebook.com/shouleinc

SHoule Inc.

300, Industriel Blvd.
St-Germain, QC J0C 1K0
Phone : 819-395-4380
Fax : 819-395-5516
info@shoule.com





AGRICULTURAL ---

SNOWPLOWS WITH HYDRAULIC WINGS



www.shoule.com 1 888 • 404 • 4380

**BUILT TO
LAST**



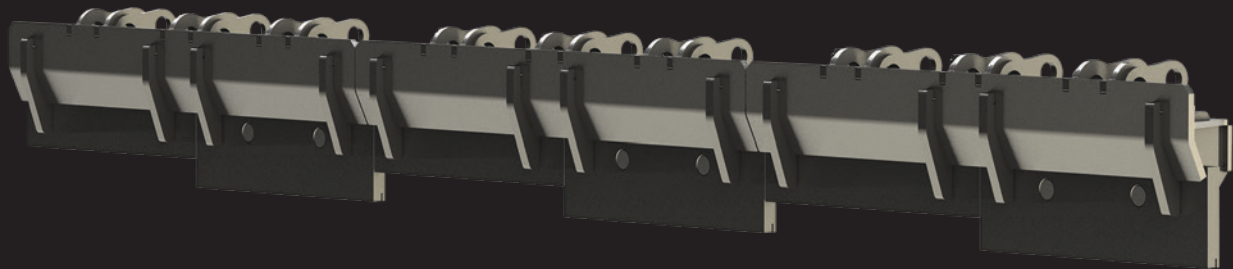
SHoule builds effective snowplows, but also especially the sturdiest on the market, to meet the requirements of today's powerful equipments.

Prototypes are tested over many months before being marketed. They are subjected to rigorous stress tests and analyzed in great detail. This enables us to optimize parts that are subject to heavy loads.

Built from the highest grade steel in the industry, our snowplows are reinforced at multiple points for maximum efficiency. By creating superior inertia, the plow can withstand greater impacts while maintaining its momentum to push snow further, even at high speeds.

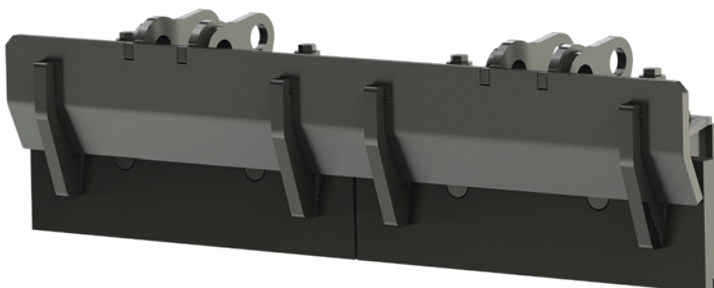
Floating Cutting Edges Trip System

FREE EDGE



Our new **FreeEdge** sectional floating cutting edges system allows for closer following of ground contours for the cleanest surface possible, without leaving any traces, thus resulting in less salt consumption for de-icing.

Each trip-action section is comprised of divisions mounted on springs that push the edges to the ground and individually adjust to all ground imperfections encountered.



Isolated section

In idle position, the cutting edge sections have a natural angle of 10 degrees toward the front. When the section is tripped when meeting an obstacle, the section swivels backward to an angle of 30 degrees.

The cutting edge sections also have a carbide insertion to increase durability.

All these elements combine to insure maximum snow removal in a single pass.



Durability with minimal maintenance

With its high grade steel construction, UHMW sliders, hardened steel cutting edges up to 3/4" thick (19 mm), spring loaded skid shoes and sturdy hydraulic cylinders, the SHoule Inc. snowplow has been designed to withstand wear and tear.

On top of its one year warranty, our snowplow has the best resale value on the market.



figure 1

High performance

The independant hydraulic wings, combined with the V45 angle system, provide maximum versatility and efficiency (figure 1).

It is also possible to have the doors work in combined action instead of independant operation. (figure 2).

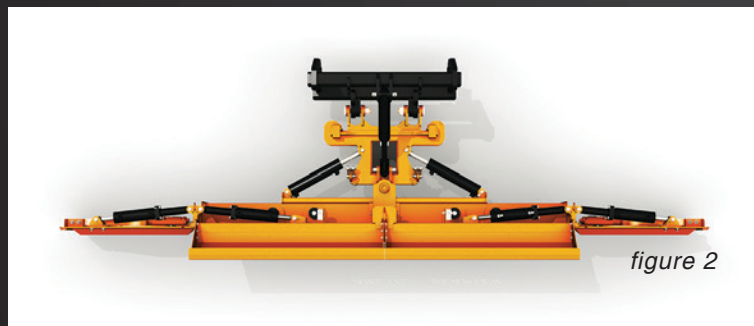
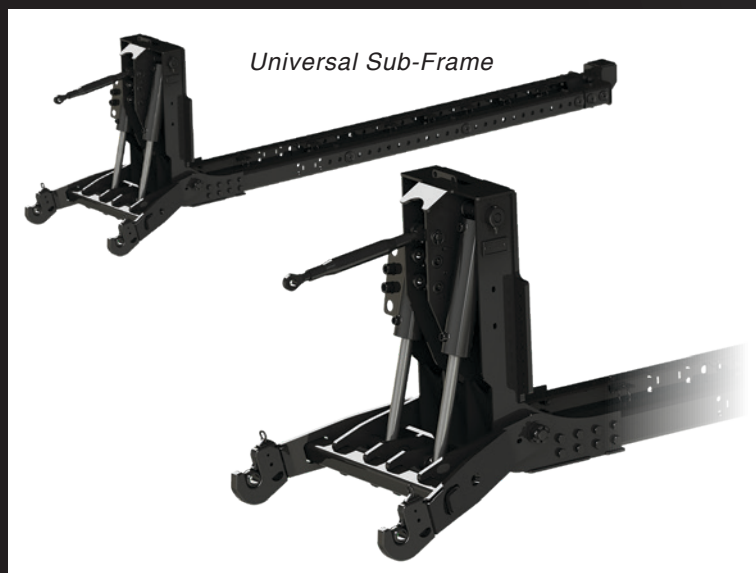


figure 2



Universal Sub-Frame

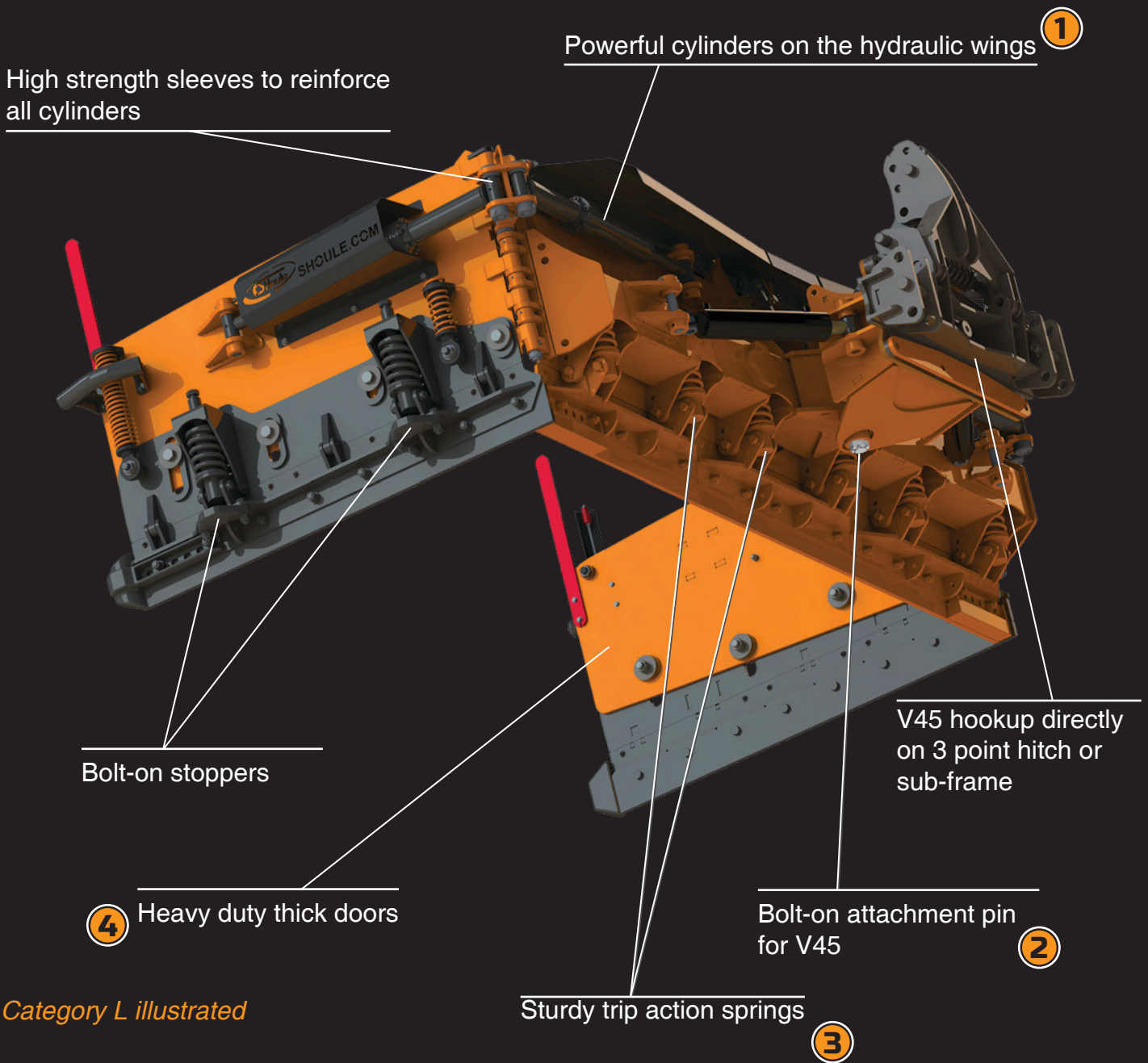
High Performance Sub-Frame

Our well-known high grade sub-frames are easily configurable for use on different tractors by ordering the appropriate interface for the desired vehicle.

Our new models of universal sub-frames (for categories S and up) couple directly onto the integrated 3 point attachment on the backs of our V45 snowplows.

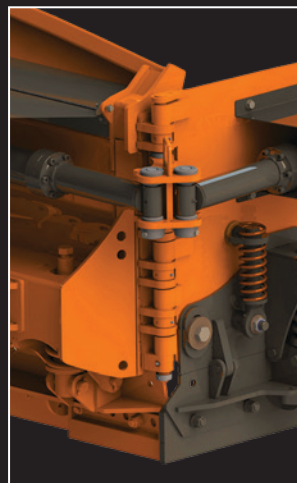
* The C+ snowplows have their own dedicated compact narrow sub-frame (no 3 point).

ADVANTAGES



Category L illustrated

	C+	S	S+	L	L+
1	2 ½"	2 ½"	3"	3 ½"	4"
2	1 ½"	1 ½"	1 ½"	2"	2"
3	8" x 3 ½"	10" x 3 ½"	10" x 3 ½"	12" x 4 ½"	12" x 4 ½"
4	3/8"	3/8"	3/8"	1/2"	5/8"

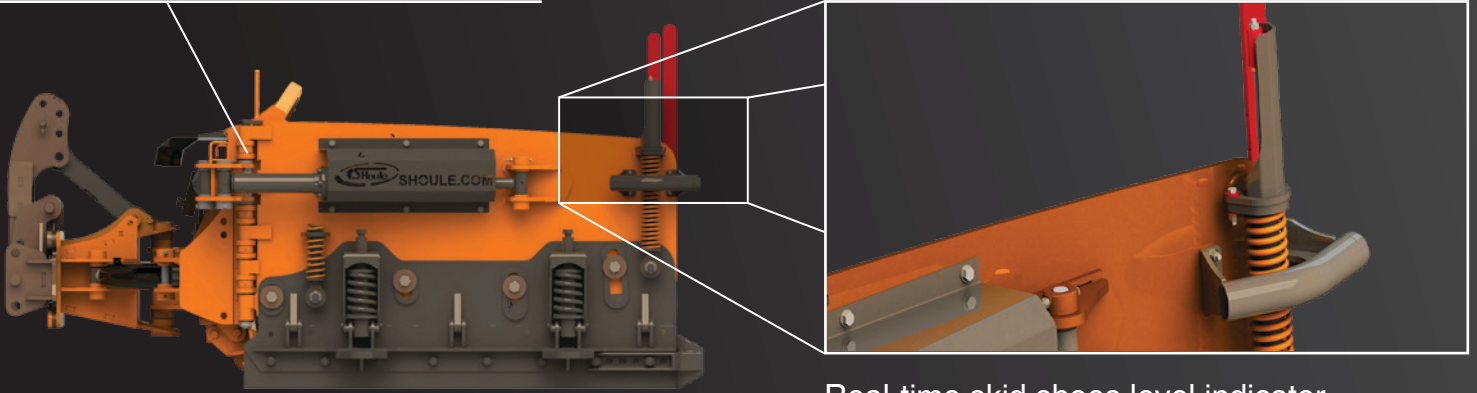


Door axis diameters

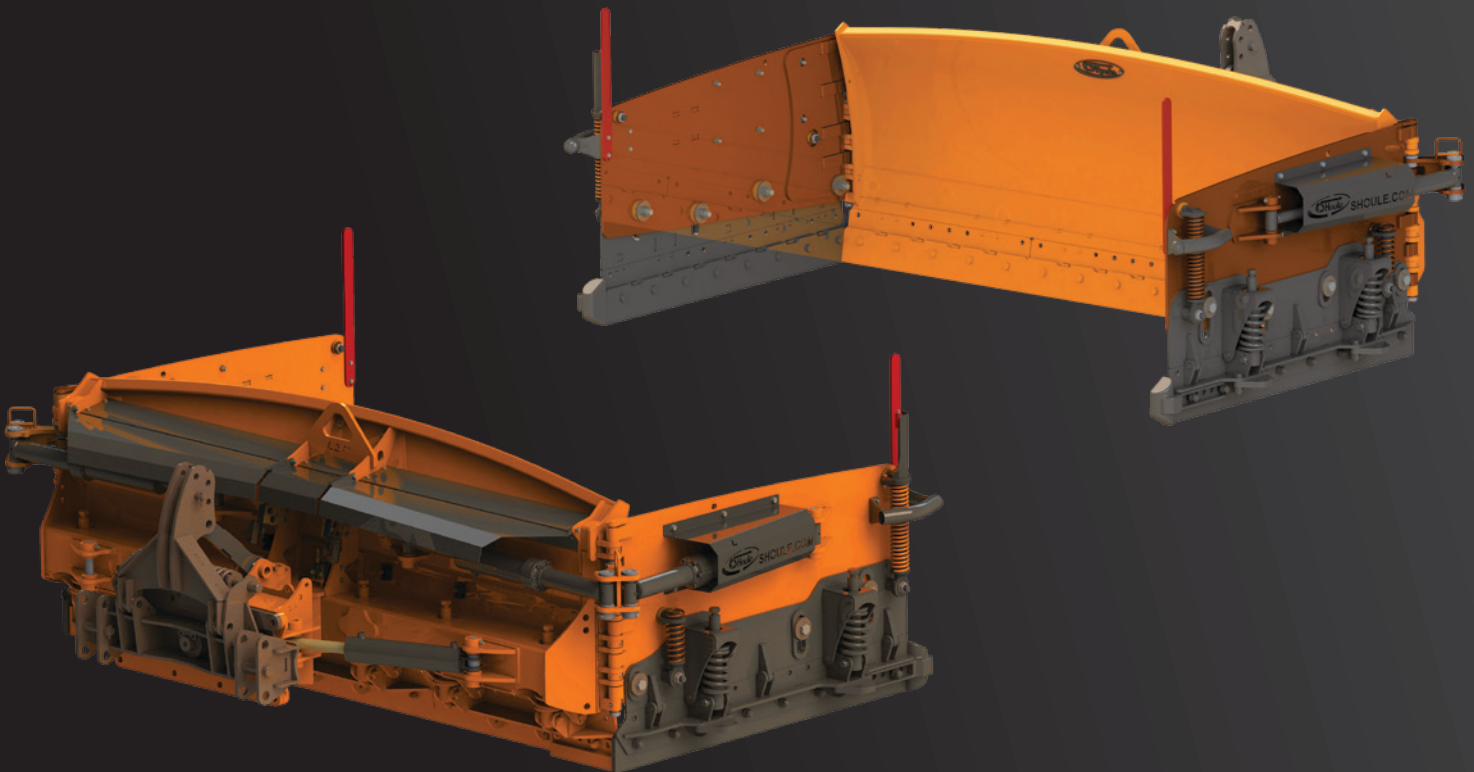
Category C+, S and S+ : 1"
Category L and L+ : 1 1/4"

made of 1045 steel

Retaining pin on hydraulic door hinges



Real-time skid shoes level indicator



- Multiple positions of hydraulic doors for maximum capacity of 180 degrees
- 3 point hitch swivel attachment integrated into back of blade
- Sturdy T1 steel hydraulic doors
- Lateral wing skid shoes with trip system, adjustable on springs and made of AR400 steel
- V45 angle system or fixed model for front-end loaders
- Lateral swivel to follow the irregularities of the ground
- Door reinforcements at strategic locations
- Greasable bushings on bearings
- Optional joystick
- Optional additional electro-hydraulic valve kits available



Snowplows with HYDRAULIC WINGS

ARCTIC BLASTER

Snowplow with individual trip-action cutting edges

07 Category **C+**
60 to 80 HP

10 Category **L**
120 to 250 HP

08 Category **S**
80 to 120 HP

11 Category **L+**
200 HP and up

09 Category **S+**
80 to 150 HP

Category C+

For tractors from 60 to 80 HP

- /// Lateral door skid shoes with trip system, adjustable on springs, made of 1/2" thick AR400 steel
- /// Sturdy 2 1/2" u-cup hydraulic door cylinders
- /// Optional joystick
- /// **Sturdy 6" cutting edges with trip-action system**
- /// 3/8" thick wings



						CONFIGURATIONS	
CLOSED WIDTH	OPEN WIDTH	CENTER HEIGHT	HEIGHT AT SIDES	DOOR LENGTH	WEIGHT	FIXED	V45
6 ft	12 ft	30 in	26 in	36 in	1 500 lb	✓	✓
7 ft	13 ft	30 in	26 in	36 in	1 610 lb	✓	✓

Category S

For tractors from 80 to 120 HP

- /// Lateral door skid shoes with trip system, adjustable on springs, made of 1/2" thick AR400 steel
- /// Sturdy 2 1/2" u-cup hydraulic door cylinders
- /// Optional joystick
- /// **Sturdy 10" cutting edges with individual trip-action system**
- /// 3/8" thick wings



						CONFIGURATIONS	
CLOSED WIDTH	OPEN WIDTH	CENTER HEIGHT	HEIGHT AT SIDES	DOOR LENGTH	WEIGHT	FIXED	V45
7 ft	14 ft	36 in	32 in	40 in	2 300 lb	✓	✓
8 ft	15 ft	36 in	32 in	40 in	2 600 lb	✓	✓
10 ft	17 ft	36 in	32 in	40 in	2 700 lb	✓	✓

AVAILABLE OPTIONS

FLOATING CUTTING EDGES TRIP SYSTEM
(on 8 and 10 foot snowplows)

FREEEDGE

CARBIDE CUTTING EDGES

Category S+

For tractors from 80 to 150 HP

- /// Lateral door skid shoes with trip system, adjustable on springs, made of 1/2" thick AR400 steel
- /// Sturdy 3" u-cup hydraulic door cylinders
- /// Optional joystick
- /// **Sturdy 10" cutting edges with individual trip-action system**
- /// 3/8" thick wings



						CONFIGURATIONS	
CLOSED WIDTH	OPEN WIDTH	CENTER HEIGHT	HEIGHT AT SIDES	DOOR LENGTH	WEIGHT	FIXED	V45
8 ft	16 ft	42 in	38 in	48 in	3 000 lb	✓	✓
10 ft	18 ft	42 in	38 in	48 in	3 350 lb	✓	✓

AVAILABLE OPTIONS

FLOATING CUTTING EDGES TRIP SYSTEM



CARBIDE CUTTING EDGES

Category L

For tractors from 120 to 250 HP

- /// Lateral door skid shoes with trip system, adjustable on springs, made of 3/4" thick AR400 steel
- /// Sturdy 3 1/2" u-cup hydraulic door cylinders
- /// Optional joystick
- /// **Sturdy 12" cutting edges with individual trip-action system**
- /// 1/2" thick wings



						CONFIGURATIONS	
CLOSED WIDTH	OPEN WIDTH	CENTER HEIGHT	HEIGHT AT SIDES	DOOR LENGTH	WEIGHT	FIXED	V45
8 ft	16 t	44 in	40 in	48 in	4 175 lb	✓	✓
8 ft	18 ft	44 in	40 in	64 in	4 250 lb	✓	✓
10 ft	18 ft	44 in	40 in	48 in	4 375 lb	✓	✓
10 ft	20 ft	44 in	40 in	64 in	4 550 lb	✓	✓

AVAILABLE OPTIONS

FLOATING CUTTING EDGES TRIP SYSTEM

FREE
EDGE

CARBIDE CUTTING EDGES

Category L+

For tractors of 200 HP and more

- /// Lateral door skid shoes with trip system, adjustable on springs, made of 3/4" thick AR400 steel
- /// Sturdy 4" u-cup hydraulic door cylinders
- /// Optional joystick
- /// Sturdy 12" cutting edges with individual trip-action system
- /// 5/8" thick wings



						CONFIGURATIONS	
CLOSED WIDTH	OPEN WIDTH	CENTER HEIGHT	HEIGHT AT SIDES	DOOR LENGTH	WEIGHT	FIXED	V45
10 ft	20 ft	50 in	46 in	64 in	5 375 lb	✓	✓
10 ft	22 ft	50 in	46 in	72 in	5 600 lb	✓	✓
12 ft	22 ft	50 in	46 in	64 in	5 775 lb	✓	✓
12 ft	24 ft	50 in	46 in	72 in	5 950 lb	✓	✓

AVAILABLE OPTIONS

FLOATING CUTTING EDGES TRIP SYSTEM

FREE
EDGE

CARBIDE CUTTING EDGES

SIDEWALK DOORS

C+ 30" height



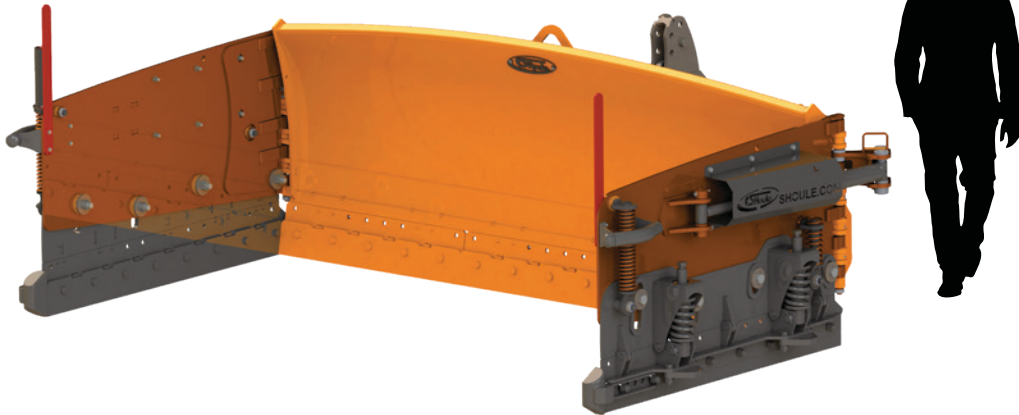
S 36" height



S+ 42" height



L 44" height



L+ 50" height









Nothing compares...

Designer expertise combined with field experience. Twenty-five years of finesse and unstoppable strength. The best value package on the market.

That's why they're preferred by the biggest names in the industry and why they continue to grow in popularity.

You'll be looking forward to the storm of the century!

www.shoule.com | 1 888 ■ 404 ■ 4380



www.facebook.com/shouleinc

SHoule Inc.

300, Industriel Blvd.
St-Germain, QC J0C 1K0
Phone : 819-395-4380
Fax : 819-395-5516
info@shoule.com

