



INDUSTRIAL ---

SNOWPLOWS WITH HYDRAULIC WINGS



**BUILT TO
LAST**

www.shoule.com 1 888 • 404 • 4380



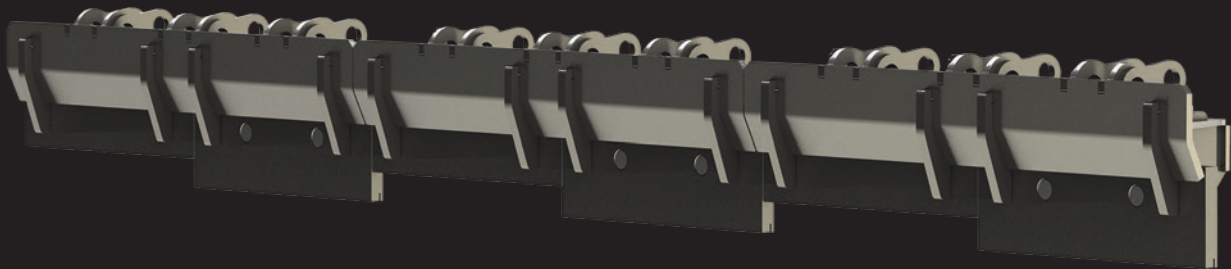
SHoule builds effective snowplows, but also especially the sturdiest on the market, to meet the requirements of today's powerful equipments.

Prototypes are tested over many months before being marketed. They are subjected to rigorous stress tests and analyzed in great detail. This enables us to optimize parts that are subject to heavy loads.

Built from the highest grade steel in the industry, our snowplows are reinforced at multiple points for maximum efficiency. By creating superior inertia, the plow can withstand greater impacts while maintaining its momentum to push snow further, even at high speeds.

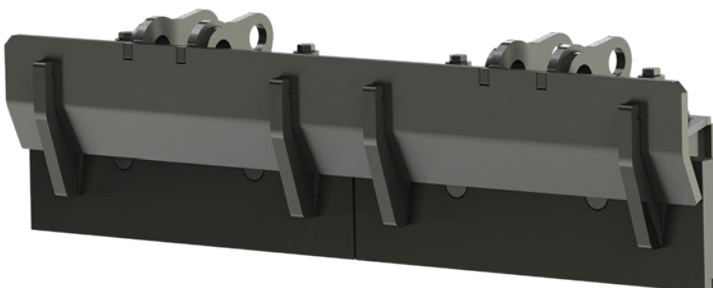
Floating Cutting Edges Trip System

FREE EDGE



Our new **FreeEdge** sectional floating cutting edges system allows for closer following of ground contours for the cleanest surface possible, without leaving any traces, thus resulting in less salt consumption for de-icing.

Each trip-action section is comprised of divisions mounted on springs that push the edges to the ground and individually adjust to all ground imperfections encountered.



Isolated section

In idle position, the cutting edge sections have a natural angle of 10 degrees toward the front. When the section is tripped when meeting an obstacle, the section swivels backward to an angle of 30 degrees.

The cutting edge sections also have a carbide insertion to increase durability.

All these elements combine to insure maximum snow removal in a single pass.



Durability with minimal maintenance

With its high grade steel construction, UHMW sliders, hardened steel cutting edges up to 3/4" thick (19 mm), spring loaded skid shoes and sturdy hydraulic cylinders, the SHoule Inc. snowplow has been designed to withstand wear and tear.

On top of its one year warranty, our snowplow has the best resale value on the market.

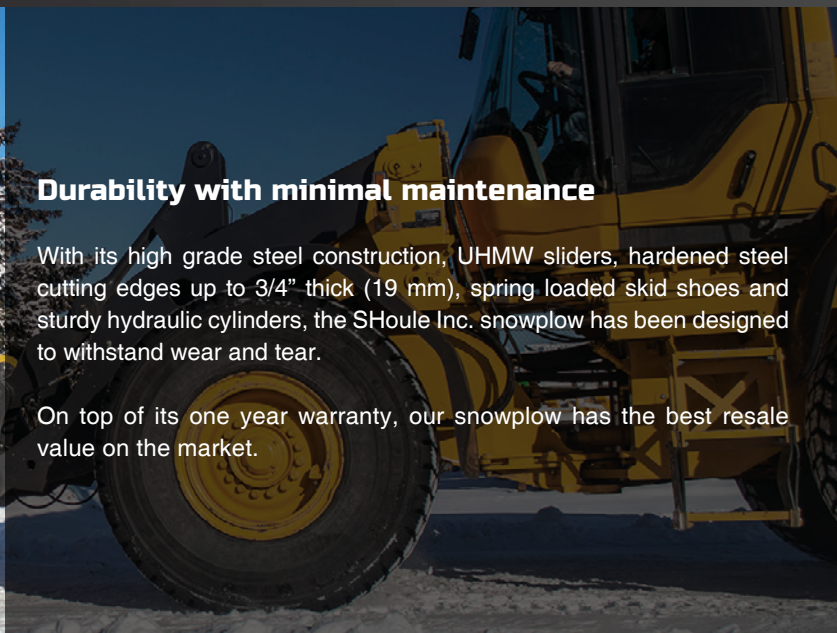


figure 1

High performance

The independant hydraulic wings, combined with the V45 angle system, provide maximum versatility and efficiency (figure 1).

It is also possible to have the doors work in combined action instead of independant operation. (figure 2).

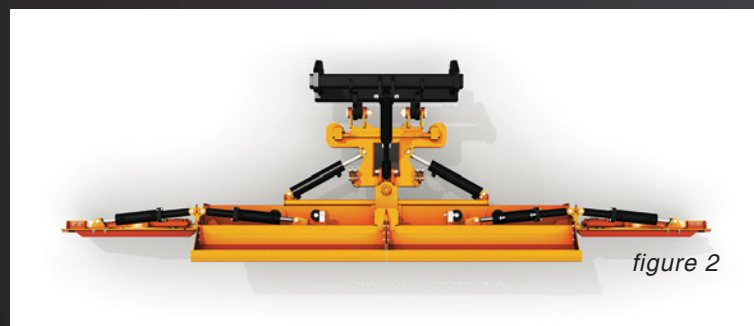
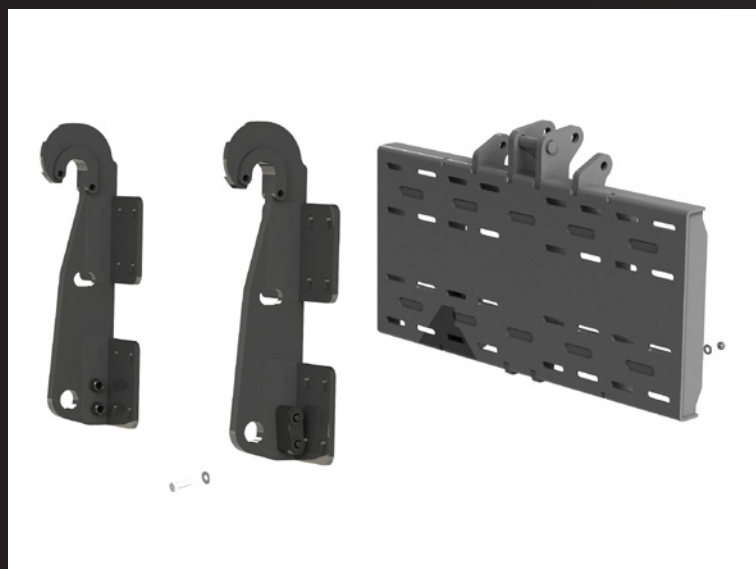


figure 2

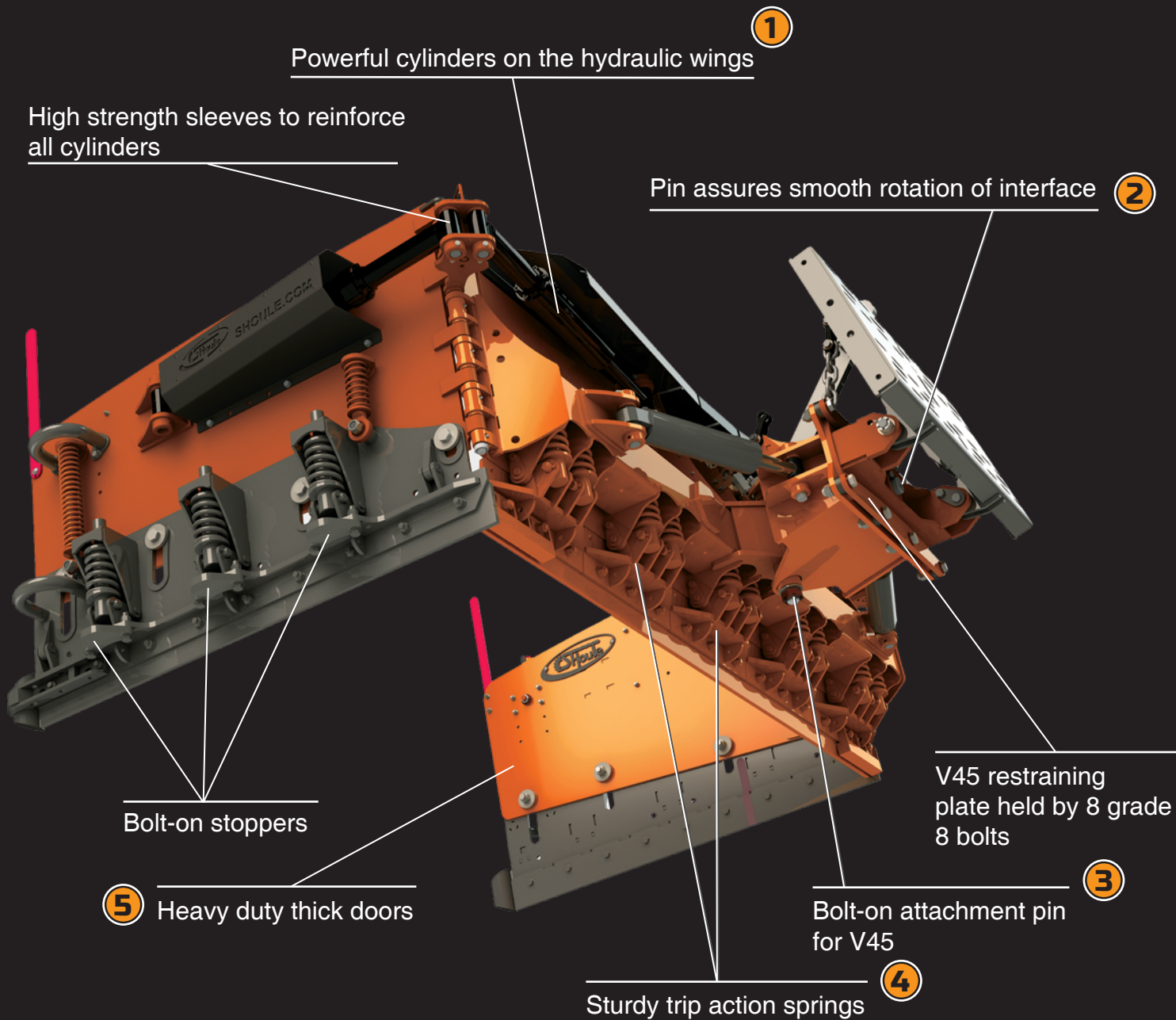


Bolt-on Attachments

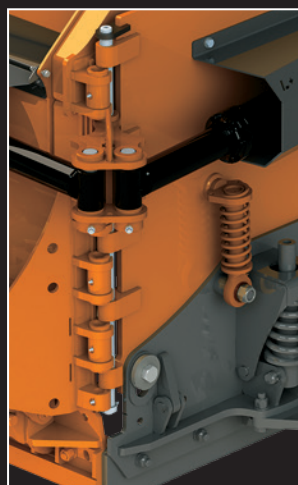
This simplified attachment system is used on new snow blade models.

A slotted universal interface plate is integrated to the very structure of the blade. Specify your loader model to order the appropriate attachment to fix directly to the universal plate.

ADVANTAGES



	C+	S	S+	L	L+	H
1	2 1/2"	2 1/2"	3"	3 1/2"	4"	4"
2	2"	2 1/2"	2 1/2"	2 1/2"	2 1/2"	3"
3	1 1/2"	1 1/2"	1 1/2"	2"	2"	2 1/2"
4	8" x 3 1/2"	10" x 3 1/2"	10" x 3 1/2"	12" x 4 1/2"	12" x 4 1/2"	12" x 4 1/2"
5	3/8"	3/8"	3/8"	1/2"	5/8"	3/4"

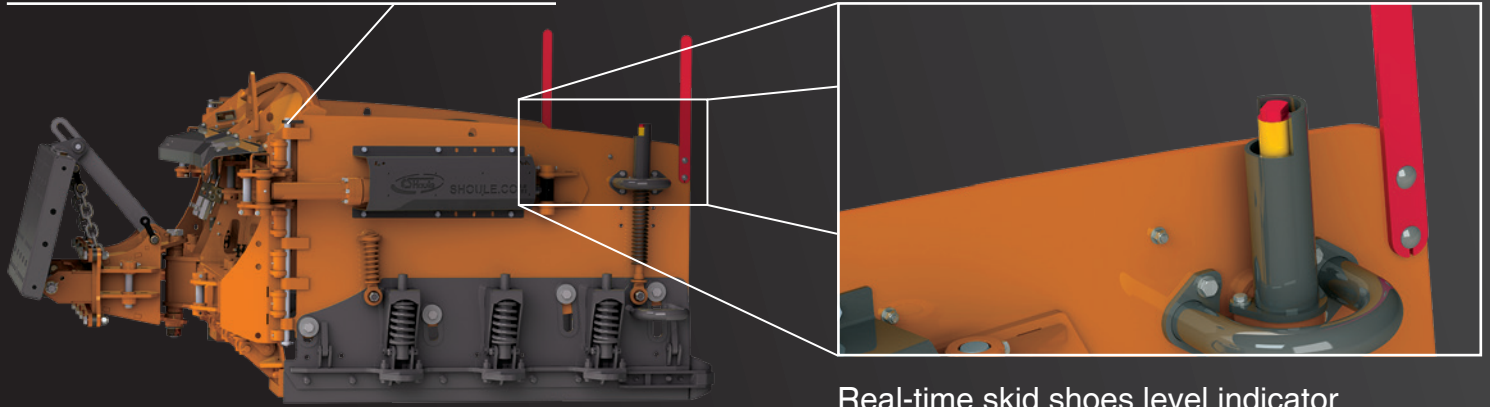


Door axis diameters

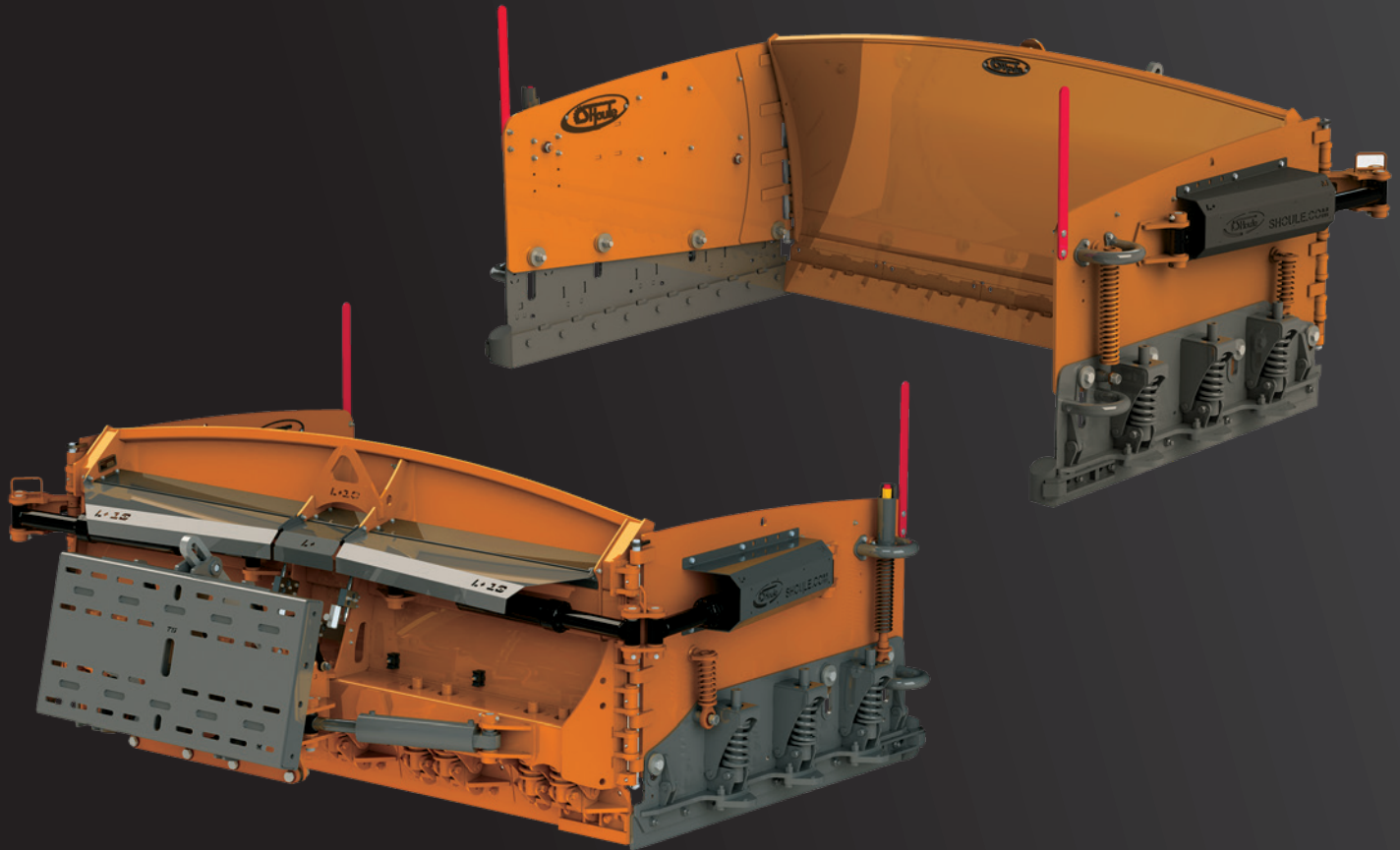
Category C+, S and S+ : 1"
Category L and L+ : 1 1/4"
Category H : 1 3/4"

made of 1045 steel

Retaining pin on hydraulic door hinges



Real-time skid shoes level indicator



- Multiple positions of hydraulic doors for maximum capacity of 180 degrees
- Sturdy T1 steel hydraulic doors
- Lateral wing skid shoes with trip system, adjustable on springs and made of AR400 steel
- V45 angle system
- Lateral swivel to follow the irregularities of the ground
- Universal plate and bolt-on attachments for easy adaptation on new vehicles
- Door reinforcements at strategic locations
- Greasable bushings on bearings
- Joystick included for ease of operation
- **Includes 2x electro-hydraulic valve kits for individual door operation, V45 system, and up/down control - standard**
- Optional additional electro-hydraulic valve kits available



Snowplows with HYDRAULIC WINGS

ARCTIC BLASTER

Snowplow with individual trip-action cutting edges

07 Category **C+**
45 to 60 HP (7000 to 11 000 lb)

10 Category **L**
90 to 150 HP (17 000 to 24 000 lb)

08 Category **S**
60 to 110 HP (11 000 to 15 000 lb)

11 Category **L+**
90 to 185 HP (24 000 to 43 000 lb)

09 Category **S+**
85 to 110 HP (14 000 to 18 000 lb)

12 Category **H**
200 HP and up (43 000 lb and up)

Category C+

For industrial loaders from 50 to 75 HP
(7000 to 11 000 lb)

- /// Lateral door skid shoes with trip system, adjustable on springs, made of 1/2" thick AR400 steel
- /// Sturdy 2 1/2" u-cup hydraulic door cylinders
- /// Two electro-hydraulic valve kits included for independent functions
- /// Joystick included for ease of operation
- /// **Sturdy 6" cutting edges with trip-action system**
- /// 3/8" thick wings



						CONFIGURATION
CLOSED WIDTH	OPEN WIDTH	CENTER HEIGHT	HEIGHT AT SIDES	DOOR LENGTH	WEIGHT	V45
6 ft	12 ft	30 in	26 in	36 in	1 500 lb	✓
7 ft	13 ft	30 in	26 in	36 in	1 610 lb	✓

Category S

For industrial loaders from 75 to 100 HP
(11 000 to 15 000 lb)

- /// Lateral door skid shoes with trip system, adjustable on springs, made of 1/2" thick AR400 steel
- /// Sturdy 2 1/2" u-cup hydraulic door cylinders
- /// Two electro-hydraulic valve kits included for independent functions
- /// Joystick included for ease of operation
- /// **Sturdy 10" cutting edges with individual trip-action system**
- /// 3/8" thick wings



						CONFIGURATION
CLOSED WIDTH	OPEN WIDTH	CENTER HEIGHT	HEIGHT AT SIDES	DOOR LENGTH	WEIGHT	V45
7 ft	14 ft	36 in	32 in	40 in	2 300 lb	✓
8 ft	15 ft	36 in	32 in	40 in	2 600 lb	✓
10 ft	17 ft	36 in	32 in	40 in	2 700 lb	✓

AVAILABLE OPTIONS

FLOATING CUTTING EDGES TRIP SYSTEM
(on 8 and 10 foot snowplows)

FREE EDGE

CARBIDE CUTTING EDGES

Category S+

For industrial loader from 85 to 110 HP
(14 000 to 18 000 lb)

- /// Lateral door skid shoes with trip system, adjustable on springs, made of 1/2" thick AR400 steel
- /// Sturdy 3" u-cup hydraulic door cylinders
- /// Two electro-hydraulic valve kits included for independent functions
- /// Joystick included for ease of operation
- /// Sturdy 10" cutting edges with individual trip-action system
- /// 3/8" thick wings



						CONFIGURATION
CLOSED WIDTH	OPEN WIDTH	CENTER HEIGHT	HEIGHT AT SIDES	DOOR LENGTH	WEIGHT	V45
8 ft	16 ft	42 in	38 in	48 in	3 000 lb	✓
10 ft	18 ft	42 in	38 in	48 in	3 350 lb	✓

AVAILABLE OPTIONS

FLOATING CUTTING EDGES TRIP SYSTEM



CARBIDE CUTTING EDGES

Category L

For industrial loaders from 90 to 150 HP
(17 000 to 24 000 lb)

- /// Lateral door skid shoes with trip system, adjustable on springs, made of 3/4" thick AR400 steel
- /// Sturdy 3 1/2" u-cup hydraulic door cylinders
- /// Two electro-hydraulic valve kits included for independent functions
- /// Joystick included for ease of operation
- /// **Sturdy 12" cutting edges with individual trip-action system**
- /// 1/2" thick wings



						CONFIGURATION
CLOSED WIDTH	OPEN WIDTH	CENTER HEIGHT	HEIGHT AT SIDES	DOOR LENGTH	WEIGHT	V45
8 ft	16 t	44 in	40 in	48 in	4 175 lb	✓
8 ft	18 ft	44 in	40 in	64 in	4 250 lb	✓
10 ft	18 ft	44 in	40 in	48 in	4 375 lb	✓
10 ft	20 ft	44 in	40 in	64 in	4 550 lb	✓

AVAILABLE OPTIONS

FLOATING CUTTING EDGES TRIP SYSTEM

FREE
EDGE

CARBIDE CUTTING EDGES

Category L+

For industrial loaders from 90 to 185 HP
(24 000 to 43 000 lb)

- /// Lateral door skid shoes with trip system, adjustable on springs, made of 3/4" thick AR400 steel
- /// Sturdy 4" u-cup hydraulic door cylinders
- /// Two electro-hydraulic valve kits included for independent functions
- /// Joystick included for ease of operation
- /// **Sturdy 12" cutting edges with individual trip-action system**
- /// **5/8" thick wings**



SIDEWALK DOOR

						CONFIGURATION
CLOSED WIDTH	OPEN WIDTH	CENTER HEIGHT	HEIGHT AT SIDES	DOOR LENGTH	WEIGHT	V45
10 ft	20 ft	50 in	46 in	64 in	5 375 lb	✓
10 ft	22 ft	50 in	46 in	72 in	5 600 lb	✓
12 ft	22 ft	50 in	46 in	64 in	5 775 lb	✓
12 ft	24 ft	50 in	46 in	72 in	5 950 lb	✓

AVAILABLE OPTIONS

FLOATING CUTTING EDGES TRIP SYSTEM



CARBIDE CUTTING EDGES

SIDEWALK DOORS

Category H

For industrial loaders from 200 to 250 HP
(45 000 lb and up)

- /// Lateral door skid shoes with trip system, adjustable on springs, made of 3/4" thick AR400 steel
- /// Sturdy 4" u-cup hydraulic door cylinders
- /// Two electro-hydraulic valve kits included for independent functions
- /// Joystick included for ease of operation
- /// Sturdy 12" cutting edges with individual trip-action system
- /// 3/4" thick wings



SIDEWALK DOOR

						CONFIGURATION
CLOSED WIDTH	OPEN WIDTH	CENTER HEIGHT	HEIGHT AT SIDES	DOOR LENGTH	WEIGHT	V45
12 pi	24 ft	60 in	56 in	72 in	7 700 lb	✓
12 pi	28 ft	60 in	56 in	96 in	8 750 lb	✓

AVAILABLE OPTIONS

FLOATING CUTTING EDGES TRIP SYSTEM

FREEEDGE

CARBIDE CUTTING EDGES

SIDEWALK DOORS

C+ 30" height



S 36" height



S+ 42" height



L 44" height



L+ 50" height



H 60" height









Nothing compares...

Designer expertise combined with field experience. Twenty-five years of finesse and unstoppable strength. The best value package on the market.

That's why they're preferred by the biggest names in the industry and why they continue to grow in popularity.

You'll be looking forward to the storm of the century!

www.shoule.com | 1 888 ■ 404 ■ 4380



www.facebook.com/shouleinc

SHoule Inc.

300, Industriel Blvd.
St-Germain, QC J0C 1K0
Phone : 819-395-4380
Fax : 819-395-5516
info@shoule.com





AGRICULTURAL ---

SNOWPLOWS WITH HYDRAULIC WINGS



www.shoule.com 1 888 • 404 • 4380

**BUILT TO
LAST**



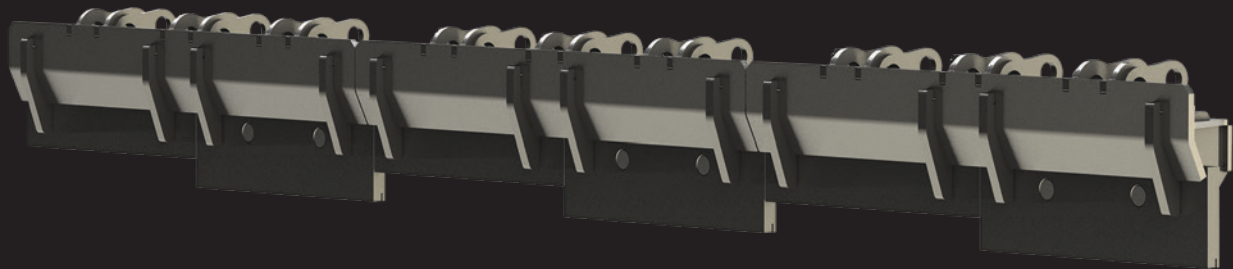
SHoule builds effective snowplows, but also especially the sturdiest on the market, to meet the requirements of today's powerful equipments.

Prototypes are tested over many months before being marketed. They are subjected to rigorous stress tests and analyzed in great detail. This enables us to optimize parts that are subject to heavy loads.

Built from the highest grade steel in the industry, our snowplows are reinforced at multiple points for maximum efficiency. By creating superior inertia, the plow can withstand greater impacts while maintaining its momentum to push snow further, even at high speeds.

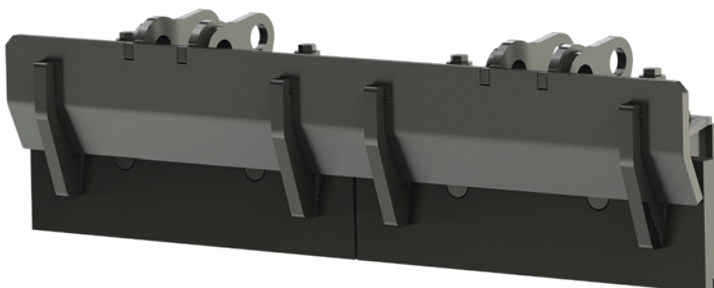
Floating Cutting Edges Trip System

FREE EDGE



Our new **FreeEdge** sectional floating cutting edges system allows for closer following of ground contours for the cleanest surface possible, without leaving any traces, thus resulting in less salt consumption for de-icing.

Each trip-action section is comprised of divisions mounted on springs that push the edges to the ground and individually adjust to all ground imperfections encountered.



Isolated section

In idle position, the cutting edge sections have a natural angle of 10 degrees toward the front. When the section is tripped when meeting an obstacle, the section swivels backward to an angle of 30 degrees.

The cutting edge sections also have a carbide insertion to increase durability.

All these elements combine to insure maximum snow removal in a single pass.



Durability with minimal maintenance

With its high grade steel construction, UHMW sliders, hardened steel cutting edges up to 3/4" thick (19 mm), spring loaded skid shoes and sturdy hydraulic cylinders, the SHoule Inc. snowplow has been designed to withstand wear and tear.

On top of its one year warranty, our snowplow has the best resale value on the market.



figure 1

High performance

The independant hydraulic wings, combined with the V45 angle system, provide maximum versatility and efficiency (figure 1).

It is also possible to have the doors work in combined action instead of independant operation. (figure 2).

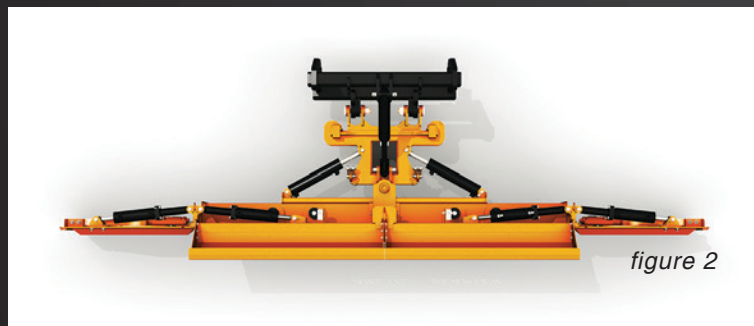
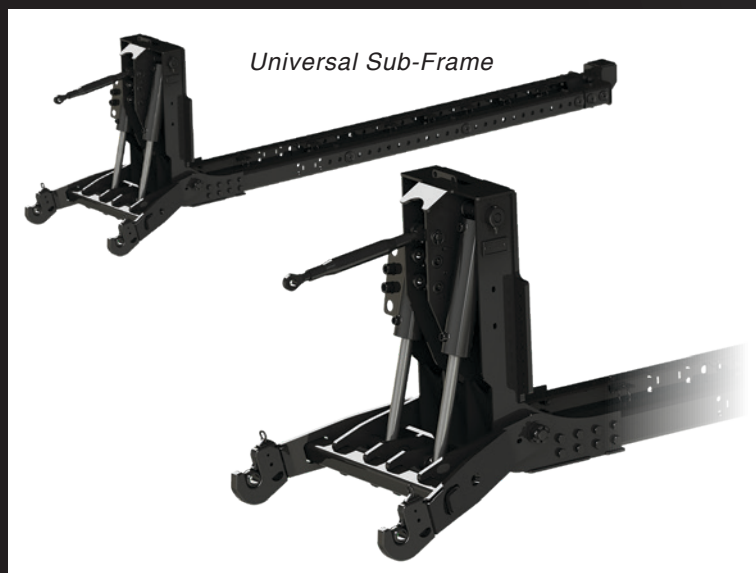


figure 2



Universal Sub-Frame

High Performance Sub-Frame

Our well-known high grade sub-frames are easily configurable for use on different tractors by ordering the appropriate interface for the desired vehicle.

Our new models of universal sub-frames (for categories S and up) couple directly onto the integrated 3 point attachment on the backs of our V45 snowplows.

* The C+ snowplows have their own dedicated compact narrow sub-frame (no 3 point).

ADVANTAGES

High strength sleeves to reinforce all cylinders

Powerful cylinders on the hydraulic wings **1**

Bolt-on stoppers

4 Heavy duty thick doors

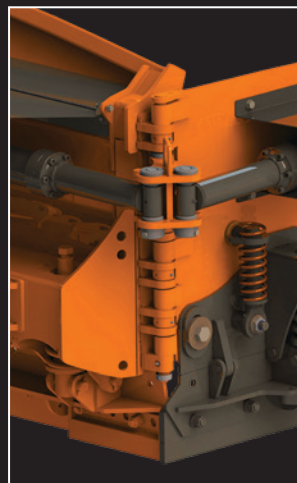
V45 hookup directly on 3 point hitch or sub-frame

Bolt-on attachment pin for V45 **2**

Sturdy trip action springs **3**

Category L illustrated

	C+	S	S+	L	L+
1	2 ½"	2 ½"	3"	3 ½"	4"
2	1 ½"	1 ½"	1 ½"	2"	2"
3	8" x 3 ½"	10" x 3 ½"	10" x 3 ½"	12" x 4 ½"	12" x 4 ½"
4	3/8"	3/8"	3/8"	1/2"	5/8"

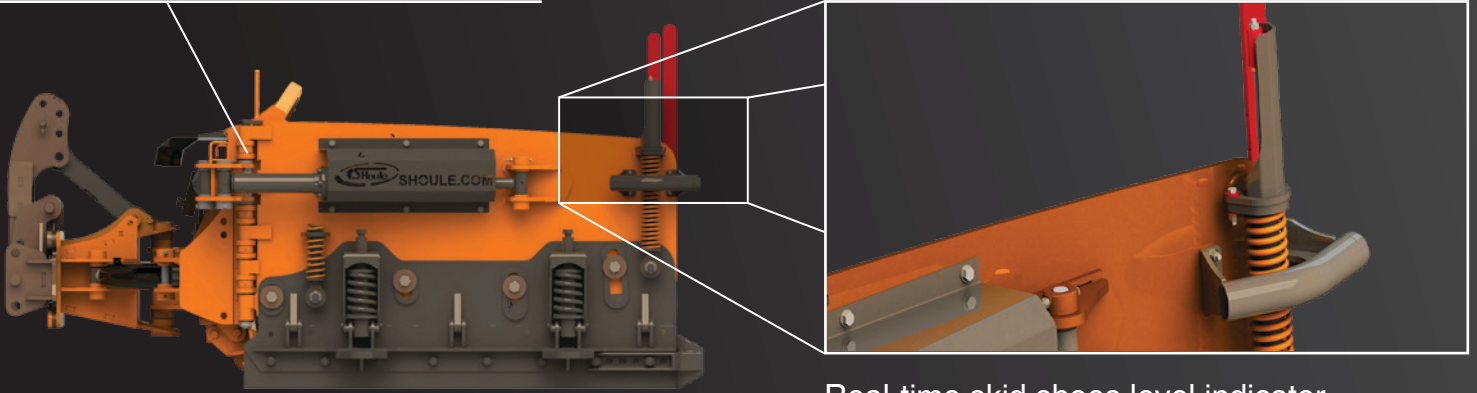


Door axis diameters

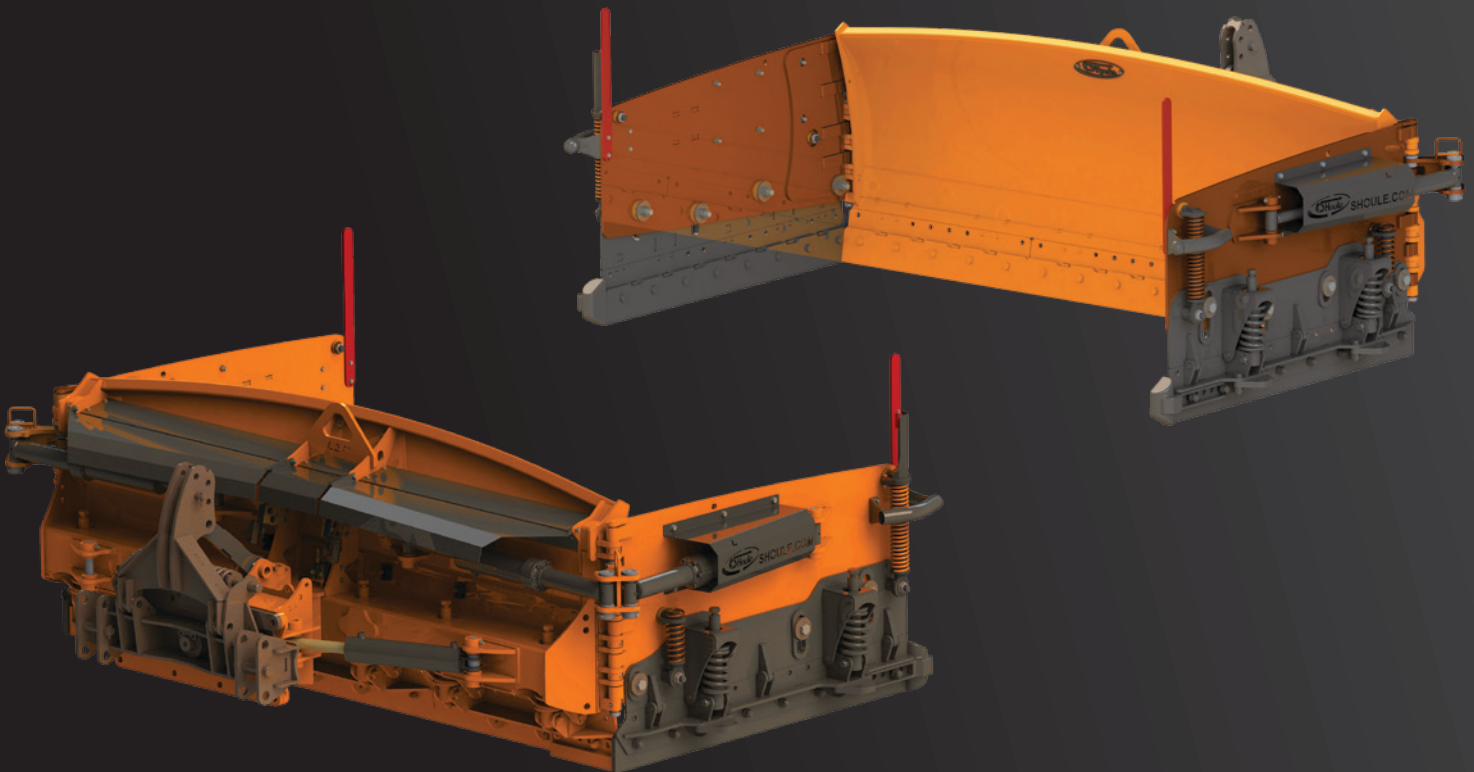
Category C+, S and S+ : 1"
Category L and L+ : 1 1/4"

made of 1045 steel

Retaining pin on hydraulic door hinges



Real-time skid shoes level indicator



- Multiple positions of hydraulic doors for maximum capacity of 180 degrees
- 3 point hitch swivel attachment integrated into back of blade
- Sturdy T1 steel hydraulic doors
- Lateral wing skid shoes with trip system, adjustable on springs and made of AR400 steel
- V45 angle system or fixed model for front-end loaders
- Lateral swivel to follow the irregularities of the ground
- Door reinforcements at strategic locations
- Greasable bushings on bearings
- Optional joystick
- Optional additional electro-hydraulic valve kits available



Snowplows with HYDRAULIC WINGS

ARCTIC BLASTER

Snowplow with individual trip-action cutting edges

07 Category **C+**
60 to 80 HP

10 Category **L**
120 to 250 HP

08 Category **S**
80 to 120 HP

11 Category **L+**
200 HP and up

09 Category **S+**
80 to 150 HP

Category C+

For tractors from 60 to 80 HP

- /// Lateral door skid shoes with trip system, adjustable on springs, made of 1/2" thick AR400 steel
- /// Sturdy 2 1/2" u-cup hydraulic door cylinders
- /// Optional joystick
- /// **Sturdy 6" cutting edges with trip-action system**
- /// 3/8" thick wings



						CONFIGURATIONS	
CLOSED WIDTH	OPEN WIDTH	CENTER HEIGHT	HEIGHT AT SIDES	DOOR LENGTH	WEIGHT	FIXED	V45
6 ft	12 ft	30 in	26 in	36 in	1 500 lb	✓	✓
7 ft	13 ft	30 in	26 in	36 in	1 610 lb	✓	✓

Category S

For tractors from 80 to 120 HP

- /// Lateral door skid shoes with trip system, adjustable on springs, made of 1/2" thick AR400 steel
- /// Sturdy 2 1/2" u-cup hydraulic door cylinders
- /// Optional joystick
- /// **Sturdy 10" cutting edges with individual trip-action system**
- /// 3/8" thick wings



						CONFIGURATIONS	
CLOSED WIDTH	OPEN WIDTH	CENTER HEIGHT	HEIGHT AT SIDES	DOOR LENGTH	WEIGHT	FIXED	V45
7 ft	14 ft	36 in	32 in	40 in	2 300 lb	✓	✓
8 ft	15 ft	36 in	32 in	40 in	2 600 lb	✓	✓
10 ft	17 ft	36 in	32 in	40 in	2 700 lb	✓	✓

AVAILABLE OPTIONS

FLOATING CUTTING EDGES TRIP SYSTEM
(on 8 and 10 foot snowplows)

FREEEDGE

CARBIDE CUTTING EDGES

Category S+

For tractors from 80 to 150 HP

- /// Lateral door skid shoes with trip system, adjustable on springs, made of 1/2" thick AR400 steel
- /// Sturdy 3" u-cup hydraulic door cylinders
- /// Optional joystick
- /// **Sturdy 10" cutting edges with individual trip-action system**
- /// 3/8" thick wings



						CONFIGURATIONS	
CLOSED WIDTH	OPEN WIDTH	CENTER HEIGHT	HEIGHT AT SIDES	DOOR LENGTH	WEIGHT	FIXED	V45
8 ft	16 ft	42 in	38 in	48 in	3 000 lb	✓	✓
10 ft	18 ft	42 in	38 in	48 in	3 350 lb	✓	✓

AVAILABLE OPTIONS

FLOATING CUTTING EDGES TRIP SYSTEM



CARBIDE CUTTING EDGES

Category L

For tractors from 120 to 250 HP

- /// Lateral door skid shoes with trip system, adjustable on springs, made of 3/4" thick AR400 steel
- /// Sturdy 3 1/2" u-cup hydraulic door cylinders
- /// Optional joystick
- /// **Sturdy 12" cutting edges with individual trip-action system**
- /// 1/2" thick wings



						CONFIGURATIONS	
CLOSED WIDTH	OPEN WIDTH	CENTER HEIGHT	HEIGHT AT SIDES	DOOR LENGTH	WEIGHT	FIXED	V45
8 ft	16 t	44 in	40 in	48 in	4 175 lb	✓	✓
8 ft	18 ft	44 in	40 in	64 in	4 250 lb	✓	✓
10 ft	18 ft	44 in	40 in	48 in	4 375 lb	✓	✓
10 ft	20 ft	44 in	40 in	64 in	4 550 lb	✓	✓

AVAILABLE OPTIONS

FLOATING CUTTING EDGES TRIP SYSTEM

FREEEDGE

CARBIDE CUTTING EDGES

Category L+

For tractors of 200 HP and more

- /// Lateral door skid shoes with trip system, adjustable on springs, made of 3/4" thick AR400 steel
- /// Sturdy 4" u-cup hydraulic door cylinders
- /// Optional joystick
- /// Sturdy 12" cutting edges with individual trip-action system
- /// 5/8" thick wings



						CONFIGURATIONS	
CLOSED WIDTH	OPEN WIDTH	CENTER HEIGHT	HEIGHT AT SIDES	DOOR LENGTH	WEIGHT	FIXED	V45
10 ft	20 ft	50 in	46 in	64 in	5 375 lb	✓	✓
10 ft	22 ft	50 in	46 in	72 in	5 600 lb	✓	✓
12 ft	22 ft	50 in	46 in	64 in	5 775 lb	✓	✓
12 ft	24 ft	50 in	46 in	72 in	5 950 lb	✓	✓

AVAILABLE OPTIONS

FLOATING CUTTING EDGES TRIP SYSTEM

FREEEDGE

CARBIDE CUTTING EDGES

SIDEWALK DOORS

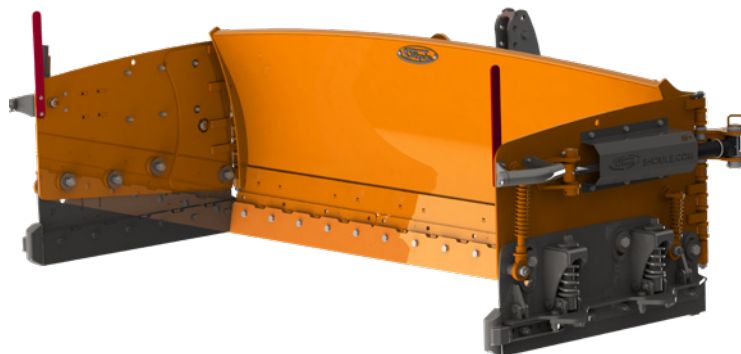
C+ 30"
height



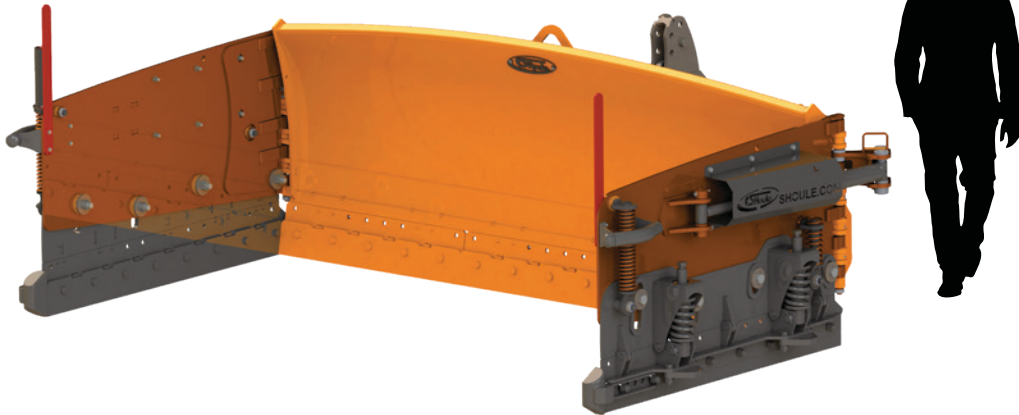
S 36"
height



S+ 42"
height



L 44" height



L+ 50" height









Nothing compares...

Designer expertise combined with field experience. Twenty-five years of finesse and unstoppable strength. The best value package on the market.

That's why they're preferred by the biggest names in the industry and why they continue to grow in popularity.

You'll be looking forward to the storm of the century!

www.shoule.com | 1 888 ■ 404 ■ 4380



www.facebook.com/shouleinc

SHoule Inc.

300, Industriel Blvd.
St-Germain, QC J0C 1K0
Phone : 819-395-4380
Fax : 819-395-5516
info@shoule.com






AGRICULTURAL PRODUCTS



**BUILT TO
LAST**

OUR SUMMER PRODUCTS



Throughout the years we have helped farmers accomplish more work and be more productive by developing several innovative products.

The original rock bucket is a key example. No one has designed a better bucket to pick up all sizes of rocks, roots or debris. It is by far the most rugged and durable bucket on the market.

For more extensive field conditions, we've developed a complete range of rock rakes designed to move rocks and roots into a windrow for easier handling.

Or now, you can also do both operations in one using our rock pickers.

Land leveling has become an important aspect of land and crop management. At SHoule, we offer a wide range of models to help farmers in all sorts of applications. From small 2WD tractors to big 4WD's we have the right size and fit. Simply choose between 5 models from 8 to 24 feet (2.43 - 7.34 m) wide

Land management is not complete unless you have a tool to handle trees. You can choose from our selection of tree shear models that fit most tractors, Skid Steer loaders, telehandlers or mini-excavators.

You can cut trees or limbs up to 16 inches (40 cm) in diameter.

Finally, help clean branches, roots and debris using our heavy duty grapples mounted on our rock buckets.



TABLE OF CONTENTS



NEW
FWD-14 Rock Rake on front 3 point hitch
page 18



06 Rock Buckets and Grapples

10 Attachments for Rock Buckets

12 Rock Rakes

20 Rock Pickers

23 Box Blade Land Levelers

24 G4 Land Levelers

30 Tree Shears

ROCK BUCKETS

BB, B, HB and SHB Series

Usable for rocks, roots and debris

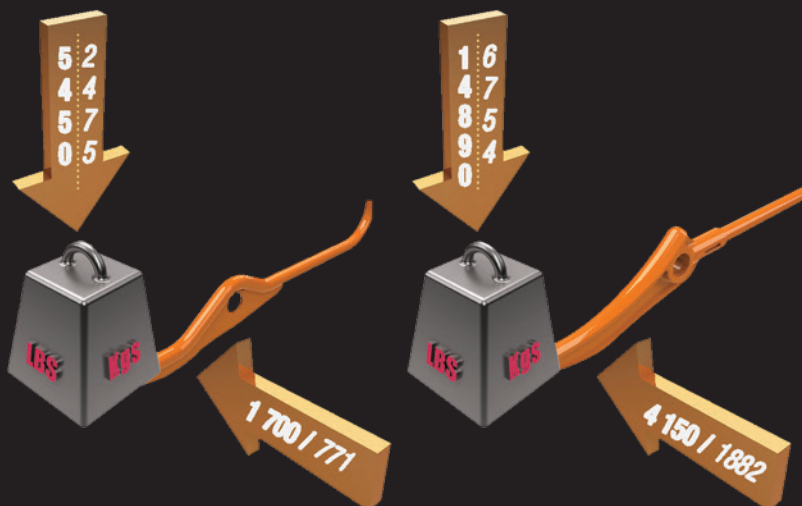
SHoule rock and material buckets are simply THE BEST on the market. With unmatched tips and lip design and high quality steel structure, we ensure you have the most robust tool to accomplish your work.

The tips are shaped according to the load distribution, and only a cast design could allow it. High carbon steel with chromolybdene provides a level of resistance no commercial steel rock bucket can match. In addition, their specially designed profile offers a stopper that allows for more volume capacity by keeping rocks from tumbling back. We have such confidence in our product that we offer a limited lifetime warranty on tips.

Our focus is not only on buckets, we also insure that our attaching brackets have the right angle that matches your OEM equipment.

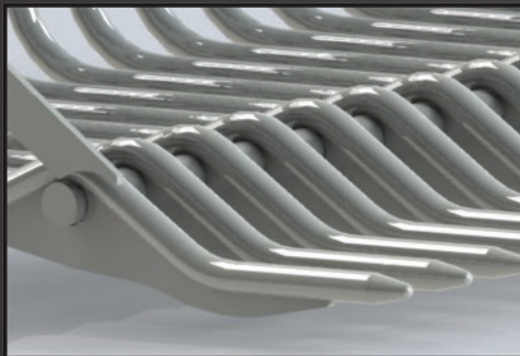
It is clear that our rock buckets are not like any other one on the market. That is because we believe our customers deserve the best. We have put the engineering and attention to details needed to make our rock buckets highly productive tools.

Industry Standards vs. SHoule Model Strength and Side Load



Cast steel tips
offer
75%
more resistance
to wear

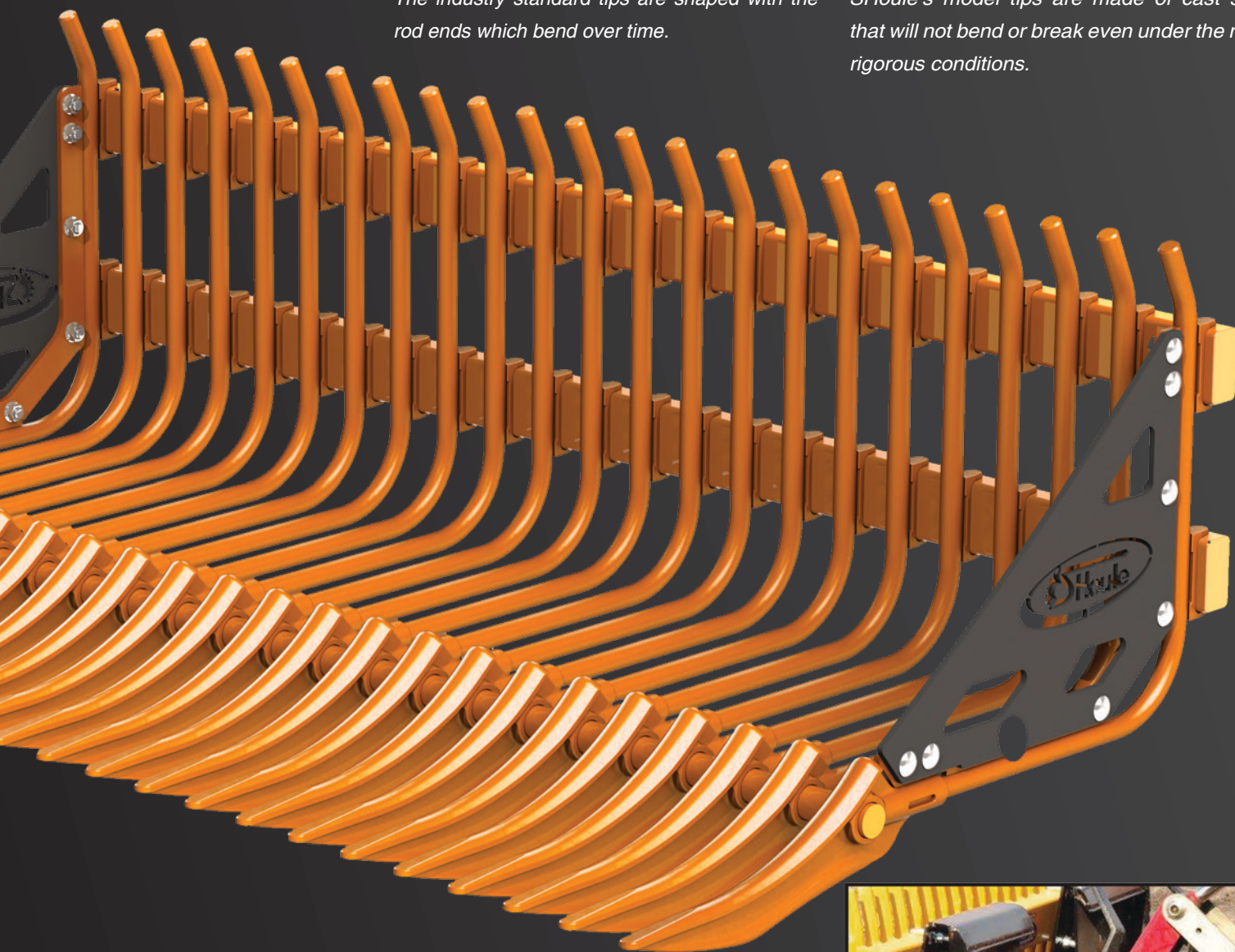
When compared to the industry standard, SHoule's tips with 1 1/4" (3.2 cm) steel rod is 98% stronger for vertical and side loads. Even more impressive is the tip with 1 1/2" (4 cm) rod that jump to 173% stronger on vertical loads and 144% stronger on side loads.



The industry standard tips are shaped with the rod ends which bend over time.



SHoule's model tips are made of cast steel that will not bend or break even under the most rigorous conditions.



Attaching brackets are designed to respect the original manufacturer's designed angles.

BB, B and HB Series

30 to 200 HP (22 to 150 KW)



The **BB** Model buckets are ideal for picking up rocks and roots on the surface of the ground.

SPECIFICATIONS	
Tine Diameter	1,125" (28 mm)
Space Between Tines	1,75" (45 mm)
Height	24,75" (63 cm)
Depth	34" (87 cm)
Tensile Strength	101,250 lb (46 000 kg)

BB Series - 30 to 60 HP (22-45 KW)

MODEL	WIDTH	WEIGHT	NUMBER OF TINES
BB-6	70" (178 cm)	705 lb (320 kg)	25

The **B** Model rock bucket is designed to pick up rocks and roots at ground surface. With care, it can also be used for light digging.

SPECIFICATIONS	
Tine Diameter	1,25" (32 mm)
Space Between Tines	2,5" (64 mm)
Height	24,75" (63 cm)
Depth	45" (114 cm)
Tensile Strength	112,500 lb (51 000 kg)

B Series - 60 to 100 HP (45-75 KW)

MODEL	WIDTH	WEIGHT	NUMBER OF TINES
B-6	70" (178 cm)	760 lb (345 kg)	19
B-7	81" (206 cm)	875 lb (397 kg)	22
B-8	92" (234 cm)	990 lb (450 kg)	25

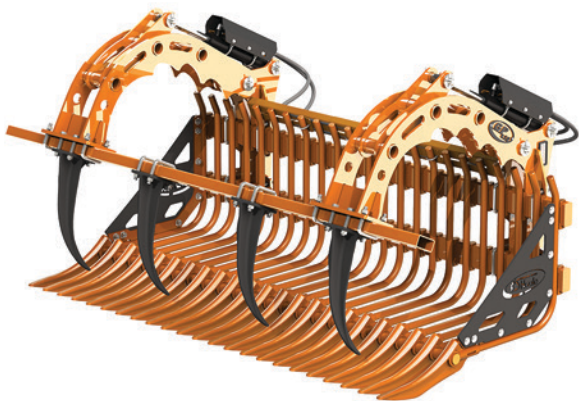
The **HB** Model bucket will scoop rocks that lay on the surface of the ground, but can also dig up medium sized rocks. To provide the most leverage, simply position the fork so it is centered near the rock you wish to unearth.

SPECIFICATIONS	
Tine Diameter	1,5" (38 mm)
Space Between Tines	3" (76 mm)
Height	24,75" (63 cm)
Depth	41,25" (105 cm)
Tensile Strength	135,000 lb (61 000 kg)

HB Series - 85 to 200 HP (63-150 KW)

MODEL	WIDTH	WEIGHT	NUMBER OF TINES
HB-6	70" (178 cm)	820 lb (372 kg)	16
HB-7	88" (223 cm)	990 lb (450 kg)	19
HB-8	97" (246 cm)	1110 lb (504 kg)	22
HB-9	110" (279 cm)	1375 lb (624 kg)	25

Grappin GP-10 Grapple in option



GP-10 Model

DESCRIPTION	WEIGHT
2 Hydraulic cylinders 2" (51 mm) dia. (hose to tractor not supplied) C/W 4 chromolybdene steel teeth	625 lb (284 kg)

OPTIONS

Extra tooth

Double Action Kit

For grabbing uneven objects. Bracketry and hydraulic fittings.

SHB Series and SGP grapple

200 HP+ (145 KW+)



The **SHB** Model bucket is built for wheel loaders or payloaders, and can also be mounted on any large backhoe loader. Each tine is reinforced with a high strength steel plate for maximum durability. With the strength of this bucket, you can dig up and move any kind of debris.

SPECIFICATIONS

Tine Diameter	1,75" (45 mm)
Space Between Tines	4" (100 mm)
Height	32" (81 cm)
Depth	34" (87 cm)
Tensile Strength	157,500 lb (71 450 kg)

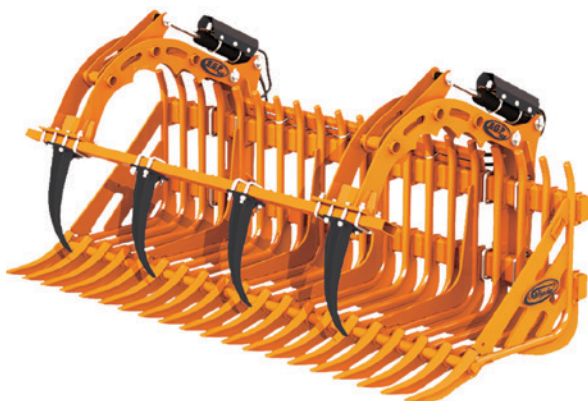
SHB Series - more than 200 HP (145 KW+)

MODEL	WIDTH	WEIGHT	NUMBER OF TINES
SHB-9	112" (285 cm)	2205 lb (1002 kg)	20

SGP-10 Grapple in option

Specially designed for heavy duty work, the **SGP-10** Series grapple is made to be used with the SHB rock bucket. The **SGP-10** is equipped with two powerful 2.5" (64 mm) hydraulic cylinders.

It is built with the same components as the GP version but heavier. Adapted for industrial loaders, mini-excavators and other loading equipment such as telehandlers.



SGP-10 Model

DESCRIPTION	WEIGHT
Grapple forks for SHB with 2 hydraulic cylinders of 2.5" (64mm) dia. (hose to tractor not supplied) C/W 4 chromolybdene steel teeth	700 lb (317 kg)

OPTIONS

Extra tooth

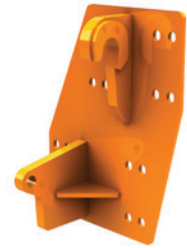
Double Action Kit

For grabbing uneven objects. Bracketry and hydraulic fittings.

QUICK ATTACH

MOST POPULAR

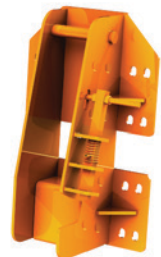
PRODUCT #	MODEL	WEIGHT
IN20-00007	ALO	115 lb (52 kg)
IN25-00001	FORD NEW HOLLAND 9030 (276, 7414, 256)	160 lb (73 kg)
IN03-00004	FORD NEW HOLLAND TV140	194 lb (88 kg)
IN01-00082	JD 640/740 (620, 720, 725, 741)	160 lb (73 kg)
IN22-00024	SKID STEER	125 lb (57 kg)



ALO



Ford New Holland TV140



JD 640



Skid Steer



JD 244

FRONT END LOADER FOR AGRICULTURAL TRACTORS

PRODUCT #	MODEL	WEIGHT
IN-20E12	UNIVERSAL ATTACHMENTS (1" DIA.)	76 lb (35 kg)
IN-20E35	UNIVERSAL ATTACHMENTS (1 1/2" DIA.)	76 lb (35 kg)
IN28-00004	ALLIED 595	105 lb (48 kg)
IN28-00005	ALLIED	82 lb (37 kg)
IN28-00003	ALLIED 795	153 lb (69 kg)
IN41-00001	ALLIED EURO 2595	136 lb (62 kg)
IN20-00004	ALO (SHB)	365 lb (166 kg)
IN02-00005	CIH L300, 510, 520	214 lb (97 kg)
IN20-00002	CASE LX162-172, L400-L750, LX156	114 lb (52 kg)
IN22-00003	FORD NEW HOLLAND 16-17LA, 32-33LA	125 lb (57 kg)
IN22-00003	FORD NEW HOLLAND 46LB, 52LA-LB-LC	125 lb (57 kg)
IN25-00002	FORD NEW HOLLAND 7312-14, 7411-12-13, 7511	153 lb (69 kg)
IN24-00001	HARDY	145 lb (66 kg)
IN01-00014	JD 240 (245, 260, 265)	109 lb (49 kg)
IN01-00043	JD 400X	89 lb (40 kg)
IN01-00019	JD 440 (410, 419, 430, 460)	100 lb (45 kg)
IN01-00040	JD 480H GLOBAL	314 lb (143 kg)
IN01-00019	JD 540 (520, 521, 541, 542)	100 lb (45 kg)
IN01-00034	JD 746	180 lb (82 kg)
IN01-00022	JD 840	360 lb (164 kg)
IN01-00032	JD 840 (SHB)	425 lb (193 kg)
IN05-00006	MASSEY 1036, 1038	95 lb (43 kg)
IN05-00005	MASSEY 1070	133 lb (60 kg)

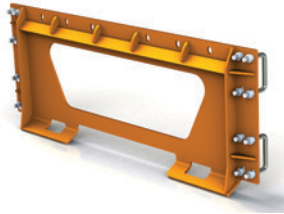
SKID STEER LOADER

PRODUCT #	MODEL	WEIGHT
IN22-00003	ASV RC50, RC60	125 lb (57 kg)
IN01-00021	JD 280	157 lb (71 kg)
IN03-00003	FORD NEW HOLLAND L425, L454, L455	183 lb (83 kg)
IN03-00007	FORD NEW HOLLAND L555	113 lb (51 kg)
IN22-00009	SKID STEER PLATE	103 lb (47 kg)
IN22-00024	SKID STEER - REGULAR	125 lb (57 kg)



QUICK ATTACH

TELEHANDLERS



Skid Steer plate

PRODUCT #	MODEL	WEIGHT
IN06-00001	MERLO 26.6 ASS	235 lb (107 kg)
IN06-00003	MERLO ZM2	286 lb (130 kg)
IN13-00016	JCB 506, 508	101 lb (46 kg)
IN13-00006	JCB 524, 550	106 lb (48 kg)
IN13-00005	JCB 524	352 lb (160 kg)
IN13-00009	JCB 530B	247 lb (112 kg)
IN13-00007	JCB 530B (SHB)	255 lb (116 kg)
IN13-00013	JCB 524, 550 (SHB)	161 lb (73 kg)

INDUSTRIAL EQUIPMENT (LOADERS, BACKHOES, ETC.)



JCB 530B (SHB)

PRODUCT #	MODEL	WEIGHT
IN02-00019	CASE 580E	142 lb (65 kg)
IN02-00014	CASE 580L (DIRECT)	174 lb (79 kg)
IN02-00012	CASE 580M (DIRECT)	179 lb (81 kg)
IN02-00011	CASE 721B	321 lb (146 kg)
IN11-00001	CAT 950	210 lb (95 kg)
IN11-00055	CAT IT14/24/28	250 lb (113 kg)
IN11-00054	CAT IT28 (SHB)	456 lb (207 kg)
IN11-00046	CAT 936F, 938F, 938G (SHB)	480 lb (218 kg)
IN11-00020	CAT IT 950 (962, 966, 972) (SHB)	482 lb (219 kg)
IN11-00048	CAT FUSION	582 lb (264 kg)
IN11-00056	CAT FUSION (SHB)	582 lb (264 kg)
IN13-00004	JCB 426HT	345 lb (147 kg)
IN01-00029	JD 244E	237 lb (108 kg)
IN01-00015	JD 244J	132 lb (60 kg)
IN01-00025	JD 310G, 410G	190 lb (86 kg)
IN01-00060	JD 310 (DIRECT)	262 lb (119 kg)
IN01-00046	JD 444E (DIRECT) (SHB)	209 lb (95 kg)
IN01-00044	JD 444J (SHB)	307 lb (139 kg)
IN01-00030	JD 544	200 lb (90 kg)
IN01-00008	JD 544 (SHB)	200 lb (90 kg)
IN04-00006	KUBOTA R520, R410, R420, R510	235 lb (107 kg)
IN16-00001	VOLVO BL71	325 lb (148 kg)
IN16-00011	VOLVO L120C (SHB)	348 lb (158 kg)
IN16-00010	VOLVO L50, L70	385 lb (175 kg)
IN16-00004	VOLVO L120	338 lb (153 kg)



CAT IT28



CAT Fusion



Volvo (SHB)

ADAPTORS FOR INDUSTRIAL EQUIPMENT

PRODUCT #	MODEL	WEIGHT
IN21-00008	JRB 416	276 lb (125 kg)
IN21-00010	JRB 416 (SHB)	311 lb (141 kg)
IN09-00037	EDF	187 lb (85 kg)
IN09-00038	EDF (SHB)	377 lb (171 kg)
IN21-00011	JRB 418 (SHB)	435 lb (186 kg)
IN26-00005	VALLÉE (SHB)	543 lb (246 kg)

Many other model attachments available or can be custom built.

Inquire about the model you need for availability.

WD, PWD and SWD Series

Usable for rocks, roots and debris

Whichever size rake you choose, we insure the same product quality. Whether you purchase a three point mounted or pull type version, all rakes come standard with bolt on, reversible and replaceable teeth made of RT-400 steel which are 4 times stronger than market standards. All mechanical rakes are protected with a slip clutch system while the hydraulic version is pressure regulated.

All our frames are of the highest grade material to support greater shocks and loads in rough field conditions. They are also driven by heavy duty double chains (single for WD-6) located in a sealed drive case for complete dust and rock protection.

WD-10H:

Unlike the standard WD models, the WD-10H rock rake is powered directly by the tractor's hydraulic system. It also includes a 25 degree hydraulic swivel, enabling it to be perpendicular to the tractor if desired.

PWD-10:

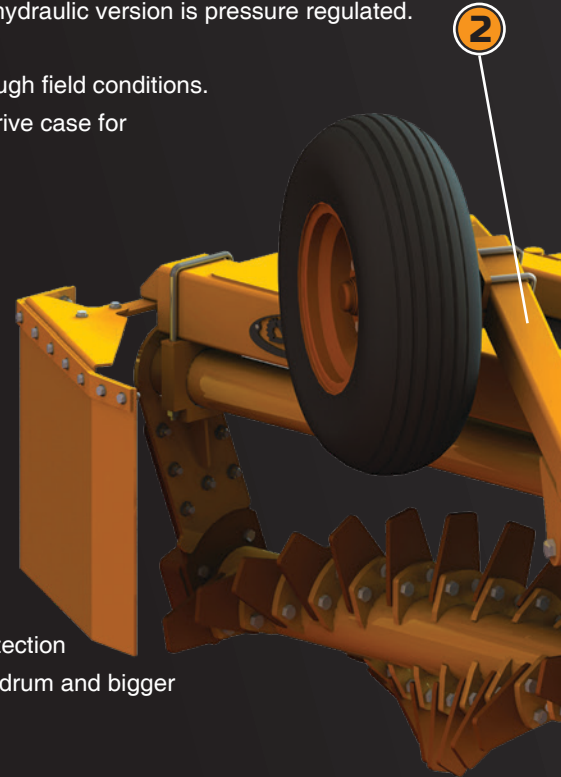
In addition to the above standard features, the PWD-10 also includes a tilt system on the rear wheel to adjust to ground contour.

SWD-15:

Bigger rakes require additional features such as the suspended drum that follow ground contour and absorbs shocks from heavier rocks. Adjustable working angle and shield protection are other key standard features of the SWD-15. Our top of the line model. It has a longer drum and bigger drive bearings. Working angle is adjustable and transport mode is achieved hydraulically.

FWD-14 :

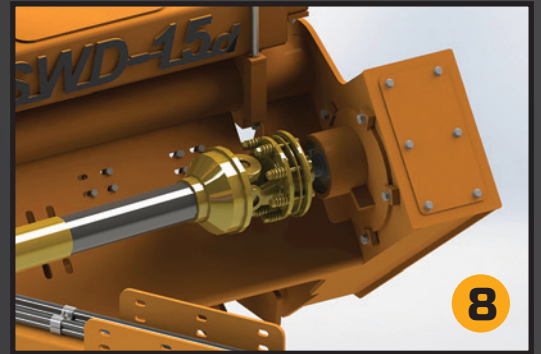
The FWD-14 is a rock rake installed on a tractor's front 3 point hitch. Like the SWD-15, this unit is fitted with a drum equipped with a flotation system that follows ground contour and absorbs shocks. The front installation makes it a perfect match for a combo with an RM-8080 Rock Master rock picker.



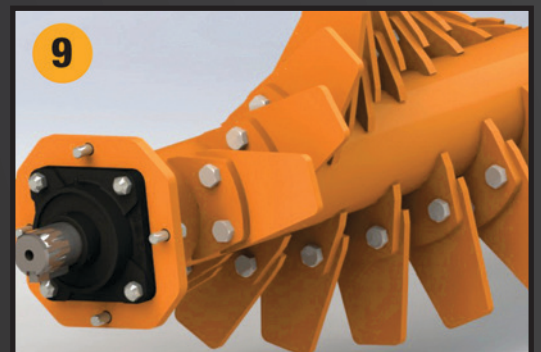
-
- 1** Pull type or 3 point hitch models
 - 2** Hydraulic transport conversion (SWD model)
 - 3** Heavy duty frame
 - 4** Flotation system (drum)
 - 5** Protective shields
 - 6** Sealed chain case
 - 7** Dual chain
 - 8** Multiple disc slip clutch
 - 9** Heavy duty replaceable and reversible teeth



Dual chain



Multiple disc slip clutch



Heavy duty teeth

WD Series

Standard 3 point hitch models, PTO driven



The WD-6 and WD-10B rock rakes are made to move rocks and roots into windrows making them easier to collect.

SPECIFICATIONS

Tires	WD-6 : 16,5"x 6,5" (419 x 165 mm) WD-10B : 18,5" x 8,5" (470 x 206 mm) Able to pivot 360° allows for greater flexibility and maneuverability
Hookup	3 point hitch mounting system
Drop Box	Chain, gears and bearings in sealed oil bath
Protection	Slip clutch
Tooth Type	RT-400 steel replaceable and reversible, 4x stronger than regular steel
Transport Conversion	None
Working Width	WD-6 : 5' 2" (1,6 m) WD-10 : 8' 8" (2,7 m)

WD Series

MODEL	WIDTH	WEIGHT	RECOM. HP HP (KW)
WD-6	7.3' (2.2 m)	1150 lb (522 kg)	40-60 (30-48)
WD-10B	11.3' (3.5 m)	1850 lb (839 kg)	65-125 (48-93)



WD Series

Hydraulic models, 25° swivel, front or rear mounted



The **WD-10H** rock rake is powered directly by the tractor's hydraulic system.

It can be installed in front on a SKID STEER loader, or front or rear mounted on a 3 point hitch.

This rock rake has a 25 degree hydraulic swivel, enabling it to be perpendicular to the tractor if desired.

The tractor's hydraulic system requirements are a flow between 10 and 16 GPM (37.85 to 6-.56 l/m), with a maximum pressure of 3000 psi (207 bars).

SPECIFICATIONS

Tires	18.5" x 8.5" (470 x 206 mm)
Hookup	SKID STEER or 3 Point Hitch
Drop Box	Chain, gears and bearings in sealed oil bath
Protection	Pressure relief valve
Tooth Type	RT-400 steel replaceable and reversible, 4x stronger than regular steel
Transport Conversion	None
Working Width	10' (3.05 m)

WD Series (hydraulic drive, 25o degree swivel)

MODEL	WIDTH	WEIGHT	RECOM. HP HP (KW)
WD-10H	11.4' (3.47 m)	2100 lb (953 kg)	65+ (49+)

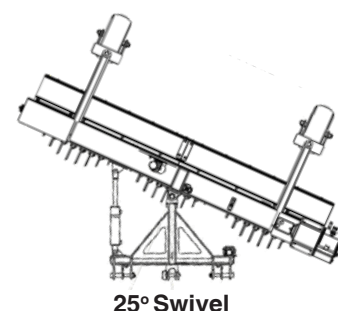
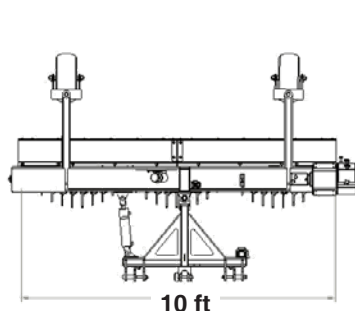
Installation type

3 POINT HITCH

SKID STEER

3 point hitch rear installation

Skid Steer front installation



PWD Series

Pulled model



The **PWD-10** rock rake is designed to dig and move rocks and roots into a windrow making them easy to collect.

SPECIFICATIONS

Tires	11L/15
Hookup	Pull Type
Drop Box	Chain, gears and bearings in sealed oil bath
Protection	Slip clutch
Tooth Type	RT-400 steel replaceable and reversible, 4x stronger than regular steel
Transport Conversion	Manual
Working Width	8' 8" (2,7 m)

PWD Series

MODEL	WIDTH	WEIGHT	RECOM. HP HP (KW)
PWD-10	11.3' (3.5 m)	2500 lb (1134 kg)	65-125 (48-93)



Série SWD

Hydraulic transport conversion



The **SWD-15** is designed to adapt to 65-125 HP (48-93 KW) tractors. It digs and moves rocks and roots to form a windrow making them easy to pick up. It is offered in 3 versions.

SPECIFICATIONS

Tires	11L/15
Hookup	Pull Type
Drop Box	Chain, gears and bearings in sealed oil bath
Protection	Slip clutch
Tooth Type	RT-400 steel replaceable and reversible, 4x stronger than regular steel
Transport Conversion	Hydraulic
Working Width	13' 10" (2,43 m)
Transport Width	8' (2,43 m)
Also included	Multiple guards, flotation system

SWD Series

MODEL	WIDTH	WEIGHT	RECOM. HP HP (KW)
SWD-15M	15.8' (4.8 m)	4275 lb (1940 kg)	65-125 (48-93)
SWD-15T	15.8' (4.8 m)	4775 (2170 kg)	65-125 (48-93)
SWD-15H	15.8' (4.8 m)	4275 lb (1940 kg)	65-125 (48-93)

Configurations...

SWD-15M

Mechanical version. Driven with a driveshaft connected to the tractor's PTO.



SWD-15T

Independant hydraulic system. The auxiliary pump is driven with a driveshaft connected to the tractor's PTO. The rake is provided with a reservoir and an oil cooler.

The oil from the tractor does not flow into the rake's system.



SWD-15H

Fully hydraulic. The rake is driven by the tractor's hydraulic system. There is no hookup to the PTO. The tractor's oil circulates in the rake's system. The tractor must provide between 16 gpm and 32 gpm @ 3000 psi.



FWD Series

Front 3 Point Hitch model



The **FWD-14** is designed to adapt to 65-125 HP (48-93 KW) tractors. It digs and moves rocks and roots to form a windrow making them easy to pick up. Installed on the front of the tractor on the 3 point hitch, this unit makes a perfect combo with *Rock Master* rock picker (page 21).

SPECIFICATIONS

Tires	18,5" x 8,5" (470 x 206 mm) 75° swivel allows greater maneuvering versatility
Hookup	3 point hitch front hookup - category 2 (1 7/16")
Drop Box	Chain, gears and bearings in sealed oil bath
Protection	Slip clutch
Tooth Type	RT-400 steel replaceable and reversible, 4x stronger than regular steel
Transport Conversion	None
Working Width	12' 4" (3.76 m)

FWD Series

MODEL	WIDTH	WEIGHT	RECOM. HP HP (KW)
FWD-14	15' (4.57 m)	3940 lb (1787 kg)	65-125 (48-93)



DRR Series

Double auger



The **DRR-30H** is a double auger rock rake designed for major chores. With two 14' floating augers, the unit unfolds to an angle of 120 degrees to achieve a total working width of 27 feet. The unit has a 30 inch central area allowing the formation of a single rock swath. Hydraulic drive activated by tractor PTO, protected with overflow caution valve and cooled with thermostatic bypass valve. Comes with hydraulic depth control.

SPECIFICATIONS

Tires	Rear: 16.5 x 16.1 (2x) / Front: 11L-15 (4x)
Hookup	Pull type (category 2 ou 3)
Drop Box	Chain, gears and bearings in sealed oil bath
Protection	Pressure relief valve
Tooth Type	RT-400 steel replaceable and reversible, 4x stronger than regular steel
Transport Conversion	Hydraulic
Working Width	27'
Transport Width	10' 2" (3,10 m)
Also included	Multiple guards, flotation system
Required Oil Flow	2x 18 GPM @ 3000 PSI
for base full hydraulic model	2x 68 l/m @206 bars

DRR Series

MODEL	WIDTH	WEIGHT	RECOM. HP HP (KW)
DRR-30	35' (10.66 m)	13 500 lb (6124 kg)	80+ (60+)
FULL HYDRAULIC - DRIVEN BY TRACTOR'S HYDRAULIC SYSTEM			

OPTIONS

Independent hydraulic system with pump on rake driven with PTO driveshaft. Reservoir and oil cooler on rake.



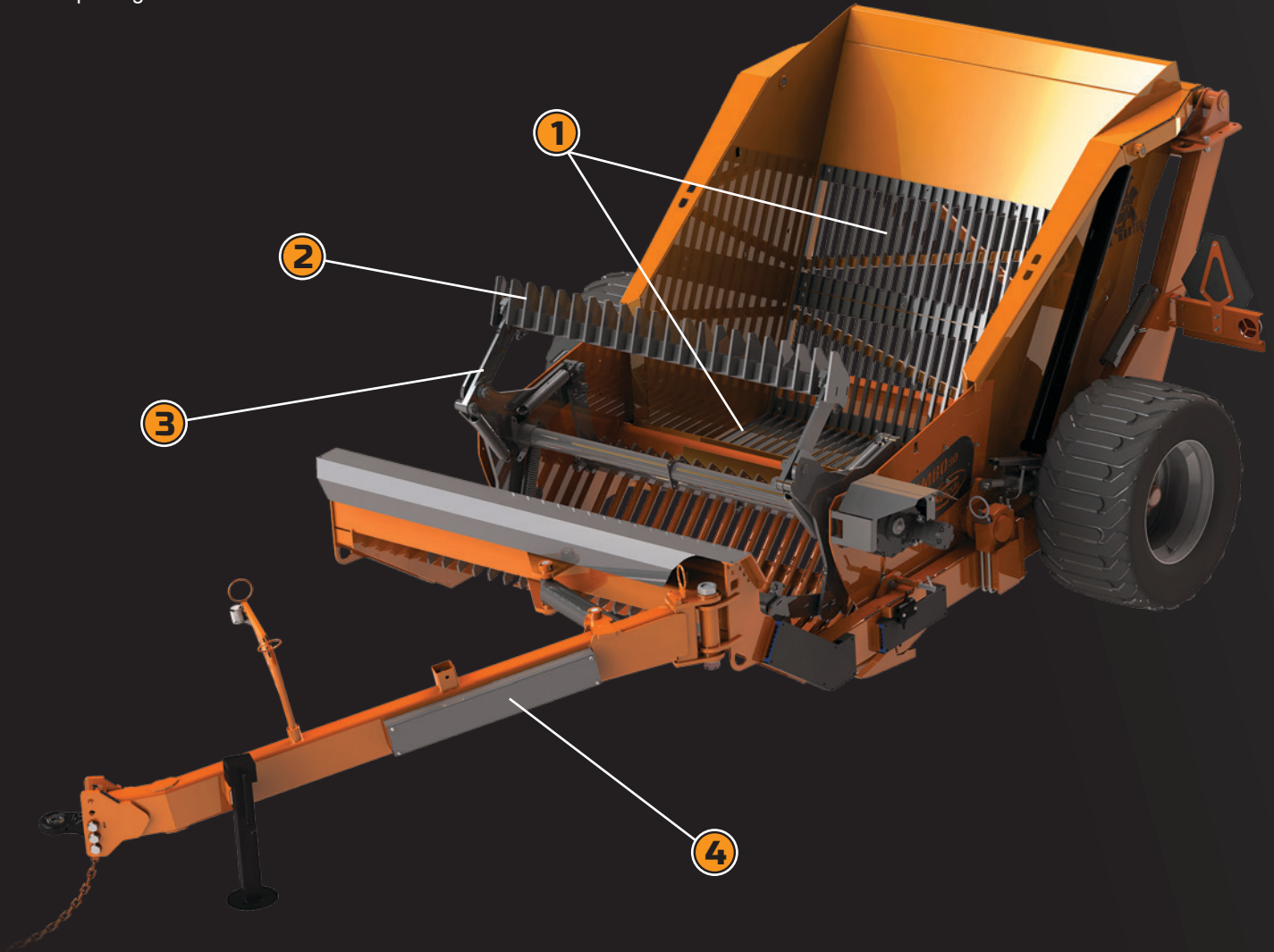
RM Series

High Volume Rock Pickers

SHoule rock pickers are built with great attention to detail to offer many advantages.

In addition to the customary SHoule sturdy, heavy build, these rock pickers offer many features when it comes to functionality, visibility, bucket capacity and maximum pickable rock diameter.

Our rock pickers feature the least amount of moving parts in the industry, are built with highly resistant AR400 steel teeth, and provide a picking width that is unmatched on the market.



1 Bucket grated on bottom and rear

2 Heavy Duty AR400 steel teeth

3 Super sturdy 3 bat reel

4 Long, heavy duty swing pole

RM-8080 Model - Rock Master

Rock Picker - 80" high



The SHoule rock pickers offer many advantages versus the competition, including: a significant dumping height, the ability to dump while in motion, the large bucket capacity and an unparalleled visibility while working.

SHoule rock pickers are designed for performance and durability.

SPECIFICATIONS

Tires	550/45X22.5 16PRTL
Tire Pressure	40 PSI / 2.76 bars
Picking Width	80" (2.03 m)
Working Width	177" (4.50 m)
Width in Transport Mode	137" (3.48 m)
Operating Length	266.5" (6.77 m)
Length in Transport Mode	275" (6.98 m)
Overall Height	82" (2.08 m)
Dumping Height	82" (2.08 m)
Bucket Capacity	106 pi3 (3 m3)
Number of Bats	3
Lift Cylinder	4" dia x 48" (10 cm dia x 122 cm)
Recommended Speed	2 to 5 mph / 3 to 8 km/h
Recommended Reel Speed	35 to 50 rpm
Minimum Rock Diameter	2" (5.08 cm)
Maximum Rock Diameter	30" (76 cm)

HYDRAULIC DRIVE

Hydraulic Outlets	3 minimum
Required Oil Flow	18-26 GPM @ 2500-3000 PSI 72-98 l/m @ 173-207 bars

RM Series

MODEL	DIMENSIONS	WEIGHT	HP MIN HP (KW)	HP RECOM. HP (KW)
RM-8080 ROCK MASTER	80" long x 80" high	9 000 lb (4082 kg)	80 (60)	120 (90+)

OPTIONS

3 HYDRAULIC OUTLETS
INSTEAD OF 4



LAND LEVELERS



HLL Series

Swivelling box blade land levelers

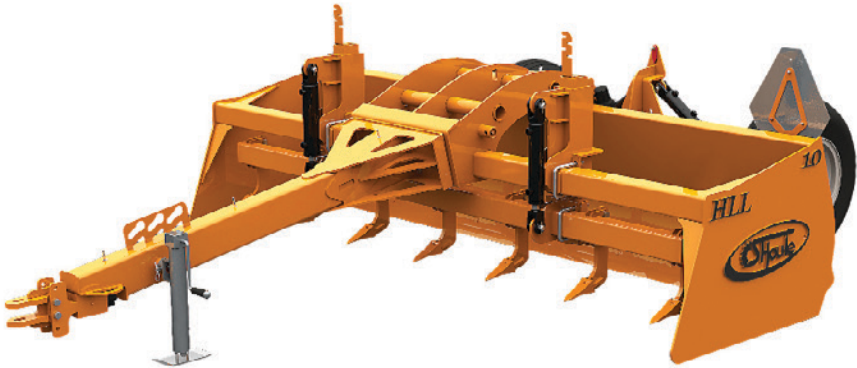


The HLL is designed to be used with utility tractors from 40 to 110 HP (30-82 KW). Best in its class in terms of strength and durability, the HLL box scraper can level almost any type of surfaces from gravel roads to fields. Tilt and height functions are controlled by 3 cylinders.

HLL Series				
MODEL	WIDTH	HEIGHT	WEIGHT	RECOMMENDED HP HP (KW)
HLL-08	8' (2.44 m)	30" (76 cm)	1850 lb (840 kg)	40-110 (30-82)
HLL-10	10' (3.05 m)	30" (76 cm)	1875 lb (850 kg)	60-110 (45-82)
HLL-12	12' (3.66 m)	30" (76 cm)	1995 lb (900 kg)	80-110 (60-82)
OPTIONS				
Scarifying Teeth kit 8' (2.4 m)				
Scarifying Teeth kit 10' (3.0 m)				
Scarifying Teeth kit 12' (3.7 m)				
Premium Level Indicator				
Post for GPS receiver				
Post for LASER receiver				



HLL option -
Premium Level Indicator



LNS, LN and SLN Series

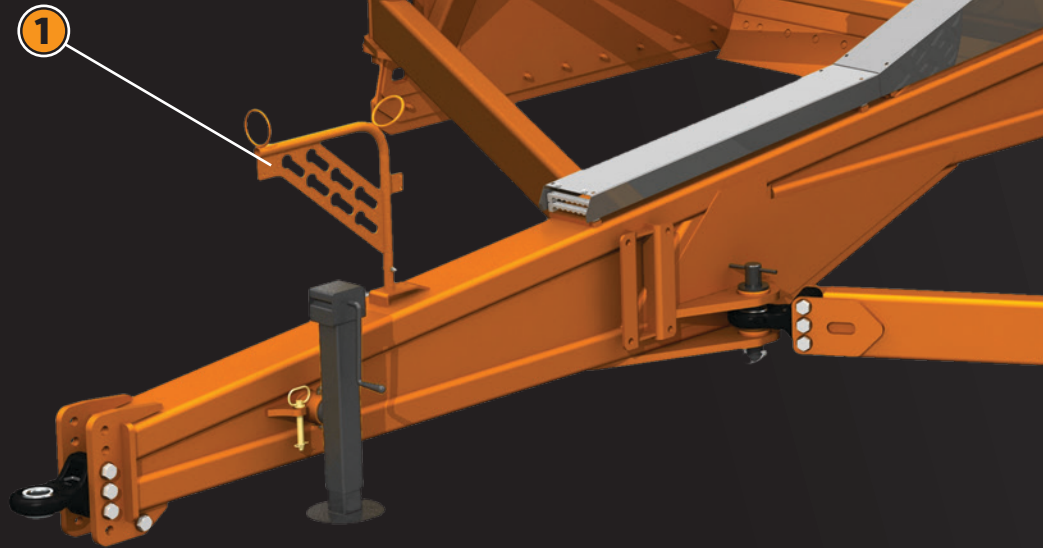
4th generation high speed land levelers

Unmatched Productivity

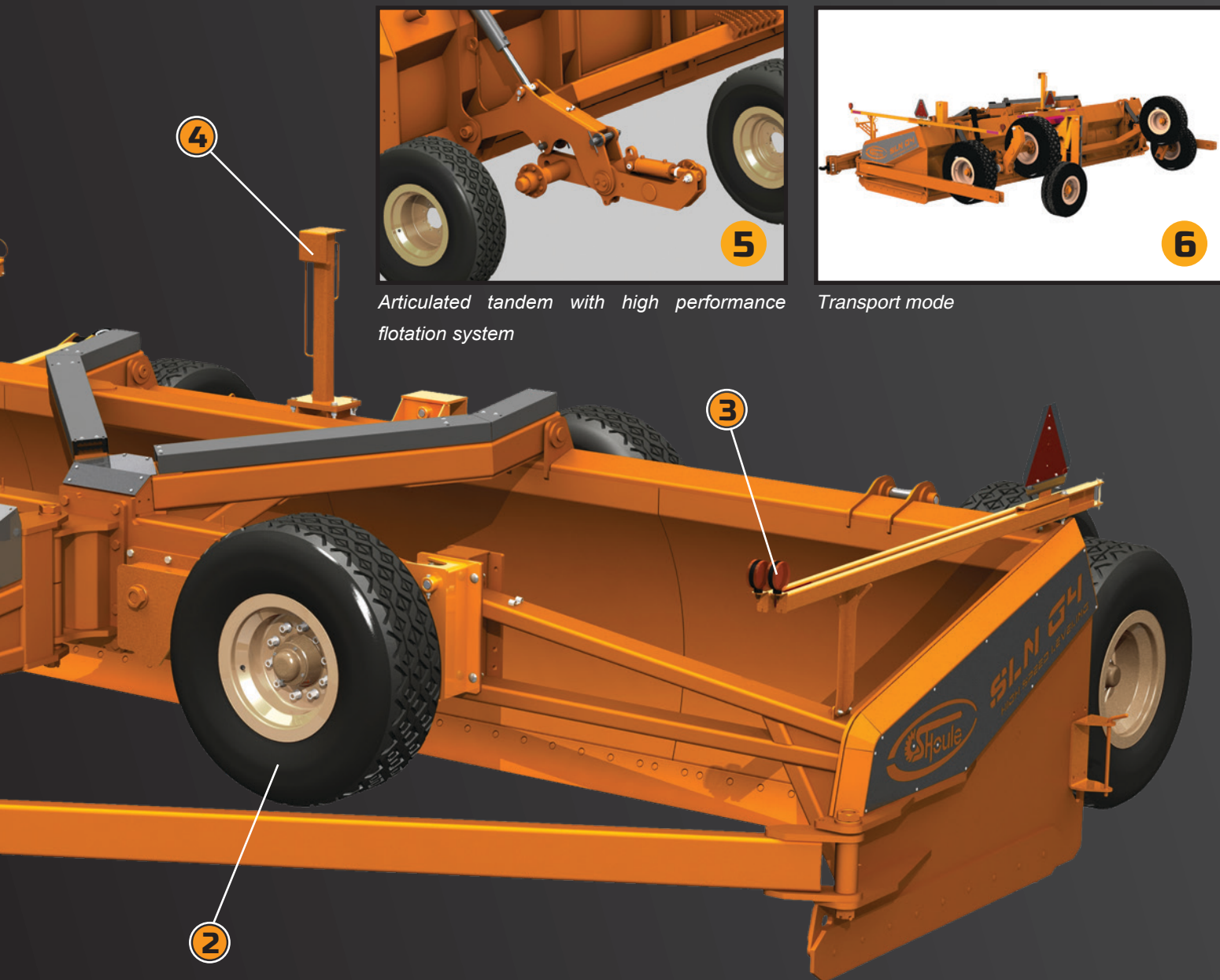
Born of more than 2 years of efforts in research and development, S Houle can now confirm that our 4th generation land levelers – our patented G4 category – can level at moderate to high speed **up to 16 mph (25 km/h)** with a stability beyond comparison, without resonance.

Our trials in the field show an average increase in speeds that can reach 3 to 4.5 mph (5 to 7 km/h) on a representative field sample. For the agriculturer, this gain represents significant time savings, especially when one considers that the time windows for land leveling a fairly short.

Our G4 levelers introduce many innovative technologies which improve the leveling experience and reduce the global leveling costs.



- 1** Hydraulic hose supports
- 2** Various tire options
- 3** Security Lights Kit included on all models
- 4** Post for GPS or LASER receiver systems
- 5** Articulated tandem with high performance flotation system for maximum waddle reduction
- 6** Transport Kit
- 7** Scarifying Teeth with or without spring trip action



Articulated tandem with high performance flotation system

Transport mode

For Perfect Fields

It's no secret: well leveled fields are essential in order to insure efficient drainage, obtain optimal growth, and prevent areas from getting too humid.

We have a complete line of agricultural land levelers which can all be ordered with different options.

Compare and you will see that our land levelers are the most complete, efficient and durable on the market.



Scarifying Teeth with or without spring trip action

LNS, LN and SLN Series

4th Generation high speed levelers

LNS Series

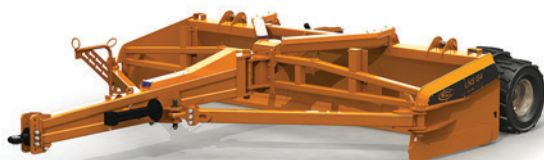
75 to 125 HP (56-94 KW)

Available Models

12 feet (3.7 meters)

14 feet (4.3 meters)

16 feet (4.88 meters)



LN Series

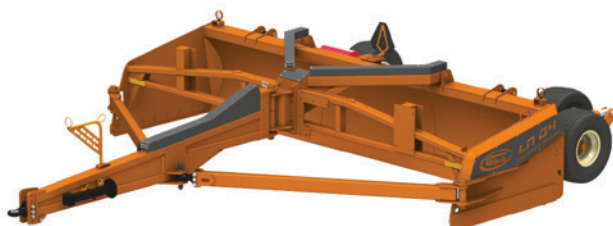
100 to 250 HP (75-190 KW)

Available Models

14 feet (4.3 meters)

16 feet (4.8 meters)

18 pieds (5.5 mètres)



SLN Series

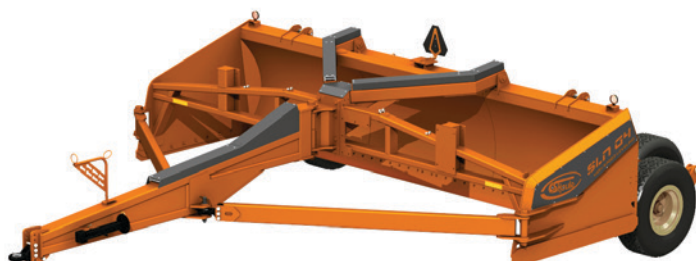
300 HP + (225 KW +)

Available Models

18 feet (5.5 meters)

20 feet (6 meters)

24 feet (6 meters)



LNS Series

4th Generation high speed levelers



The LNS G4 land leveler, adapted for use on **75 to 125 HP (56 to 94 KW) tractors**, comes standard with the following options:

- Left Articulated Tandem
- Security Lights Kit
- Tires BKT TR 315 31 X 15.5-15



- Patented Design -

LNS Series

MODEL	WIDTH	HEIGHT	WEIGHT	RECOMMENDED HP HP (KW)	CAPACITY ft³ / m³
LNS-12	12' (3.66 m)	38" (96 cm)	6700 lb (3039 kg)	75-125 (56-94)	120 ft³ (3.40 m³)
LNS-14	14' (4.27 m)	38" (96 cm)	7050 lb (3198 kg)	75-125 (56-94)	140 ft³ (3.97 m³)
LNS-16	16' (4.88 m)	38" (96 cm)	7400 lb (3357 kg)	75-125 (56-94)	160 ft³ (4.53 m³)

OPTIONS

Security Lights Kit

Post for GPS receiver

Post for LASER receiver

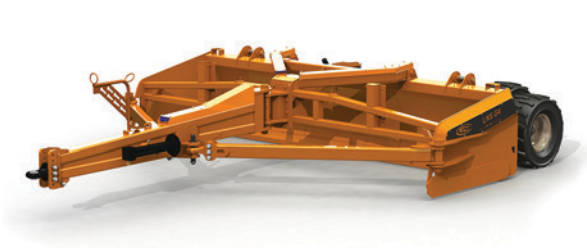
Left Articulated Tandem

Double Articulated Tandems

Scarifying Teeth kit 12 ft (3.66 m) - weight 1000 lb (454 kg)

Scarifying Teeth kit 14 ft (4.27 m) - weight 1150 lb (522 kg)

Scarifying Teeth kit 16 ft (4.88 m) - weight 1250 lb (567 kg)



LN Series

4th Generation high speed levelers



The LN G4 land leveler, adapted for use on **100 to 250 HP (75 to 190 KW) tractors**, comes standard with the following options:

- Left Articulated Tandem
- Security Lights Kit
- Tires BKT AW705 15.0/55-17 18PRTL



- Patented Design -

LN Series

MODEL	WIDTH	HEIGHT	WEIGHT	RECOMMENDED HP HP (KW)	CAPACITY ft³ / m³
LN-14	14' (4.27 m)	45" (1.14 m)	9000 lb (4082 kg)	100-250 (75-190)	215 ft³ (6.09 m³)
LN-16	16' (4.88 m)	45" (1.14 m)	9500 lb (4309 kg)	100-250 (75-190)	245 ft³ (6.94 m³)
LN-18	18' (5.50 m)	45" (1.14 m)	10 000 lb (4536 kg)	100-250 (75-190)	275 ft³ (7.78 m³)

OPTIONS

Transport Kit

Traction Tires (BKT TR882 400/60-15.5 18PRTL)

Security Lights Kit

Post for GPS receiver

Post for LASER receiver

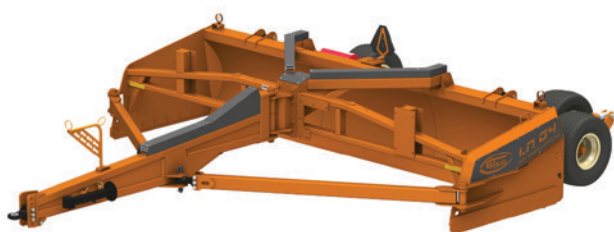
Articulated Left Tandem

Double Articulated Tandems

Scarifying Teeth kit 14 ft (4.27 m) - weight 1150 lb (522 kg)

Scarifying Teeth kit 16 ft (4.88 m) - weight 1250 lb (567 kg)

Scarifying Teeth kit 18 ft (5.50 m) - weight 1300 lb (590 kg)



SLN Series

4th Generation high speed levelers



The SLN G4 land leveler, adapted for use on **300+ HP (225 KW+)** tractors, comes standard with the following options:

- Left Articulated Tandem
- Security Lights Kit
- Used Truck Tires 425/65R22.5 8 bolts.

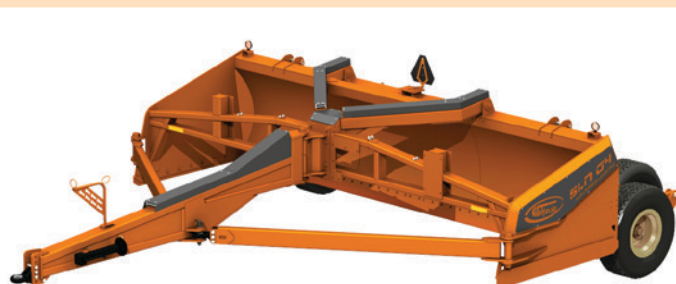


- Patented Design -

SLN Series					
MODEL	WIDTH	HEIGHT	WEIGHT	RECOMMENDED HP HP (KW)	CAPACITY ft³ / m³
SLN-18	18' (5.50 m)	57" (1.45 m)	14 500 lb (6577 kg)	300+ (225+)	405 ft³ (11.47 m³)
SLN-20	20' (6.10 m)	57" (1.45 m)	15 000 lb (6804 kg)	300+ (225+)	450 ft³ (12.74 m³)
SLN-24	24' (7.32 m)	57" (1.45 m)	16 000 lb (7258 kg)	300+ (225+)	540 ft³ (15.29 m³)

OPTIONS
Transport Kit
Security Lights Kit
Post for GPS receiver
Post for LASER receiver
Articulated Left Tandem
Double Articulated Tandems
Scarifying Teeth kit 18 ft (5.50 m) - weight 1400 lb (635 kg)
Scarifying Teeth kit 20 ft (6.10 m) - weight 1425 lb (646 kg)
Scarifying Teeth kit 24 ft (7.30 m) - weight 1475 lb (669 kg)

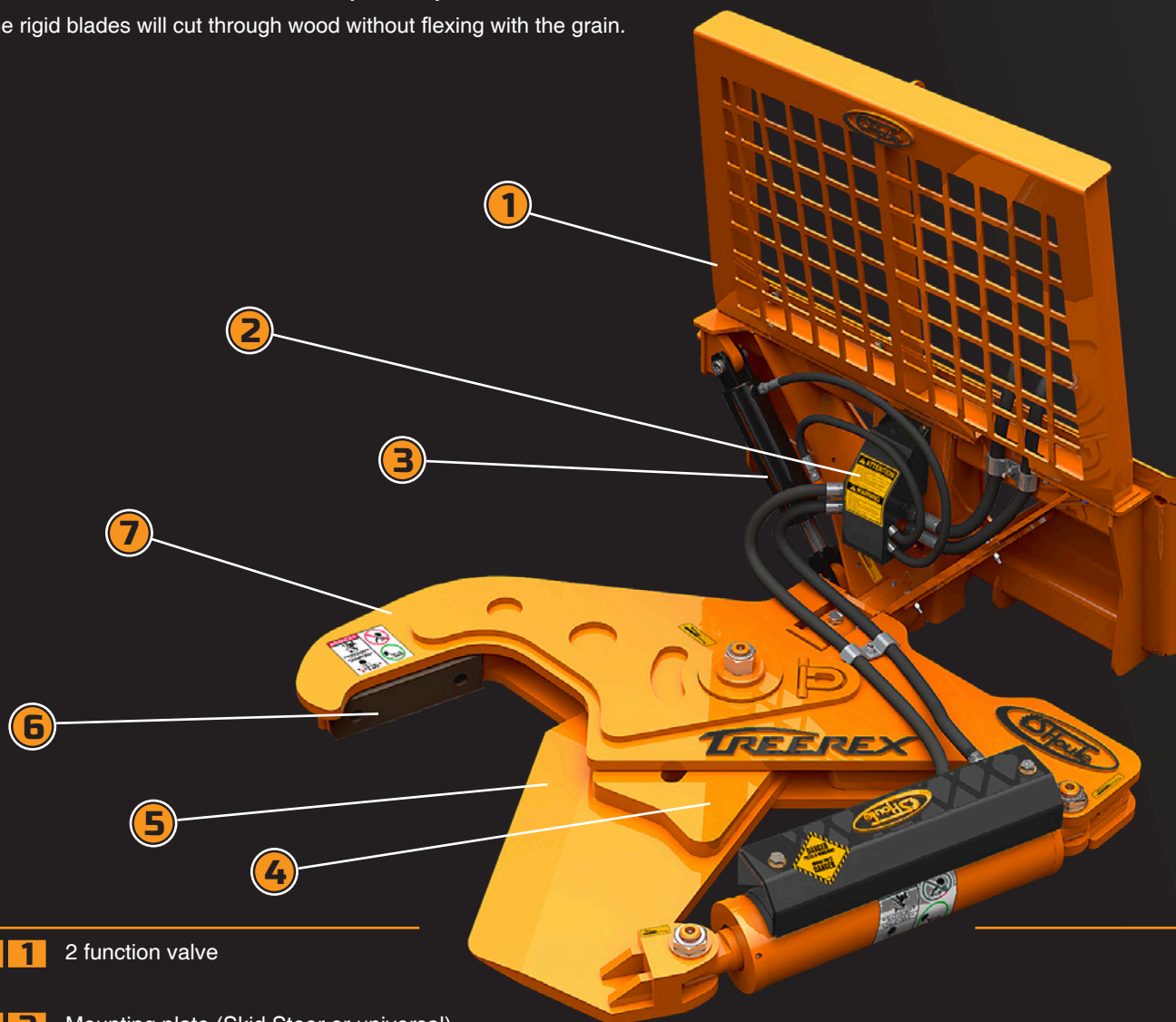
OPTIONS
Used Truck Tires 425/65R22.5
New Truck Tires 425/65R22.5



TS Series

Models for loaders and models with grapple arms for excavators

All our tree shears are designed to adapt to most tractors, loaders, telehandlers and skid steer loaders. They operate on standard or high flow hydraulics using one set of remote couplers only, a solenoid valve assembly controls the various applications. Because of their ability to rotate up to 110 degrees, our tree shears are ideal for adjusting to all cutting angles or simply to crimp a cut limb to move it away. The blades are made of the highest capacity steel (RT-400) for longer service life and reduced maintenance. Not only are they solid but the rigid blades will cut through wood without flexing with the grain.



- 1** 2 function valve
- 2** Mounting plate (Skid Steer or universal)
- 3** Rotation cylinder
- 4** Rigid blade guides
- 5** RT-400 blade
- 6** Teflon plate
- 7** Retaining hook

TS-16 Treerex

Tree Shear for diameters up to 16"



The particular geometry of the **Treerex** is shaped like a jaw with a lip that acts as a retaining hook, keeping the tree or branch from moving away when cutting or transporting. The teflon plate allows for a perfect cut, eliminating the scuffing that occurs on most common models.

It is the most powerful tree shear on the market; it is capable of cutting branches or trees up to 16" (41 cm) in diameter. Its single blade action allows for better control and quality of cut and its ability to rotate allows you to easily cut at angles or move fallen trees. Its low profile allows to cut trees at ground level. It is especially designed for Skid Steer loaders and telehandlers.

SPECIFICATIONS

Length	60" (150 cm)
Width	58" (147 cm)
Tree Cutting Power	85,000 lb @ 3000 PSI / 38,000 kg @ 206 bars
Rotation	0-110°
Blade	RT-400 steel
Valve	Solenoid 2 functions 1 command
Hydraulic Outlets	1
Minimum Oil Flow	20-25 GPM @ 2750 PSI / 90-114 l/m @ 190 bars

TS-16 Treerex

MODEL	DESCRIPTION	WEIGHT
TS-16	Tree Shear 16" (41 cm) Universal back	1550 lb (703 kg)
TS-16 SS	Tree Shear 16" (41 cm) Skid Steer back	1550 lb (703 kg)

OPTIONS

Protection Guard (155 lb (70 kg))
Caterpillar electrical connector kit (Cat Plug)
High Flow solenoid

TREEREX



Cuts through grain without bending

Universal



Skid Steer



TS-08 and TS-17

Tree Shears for diameters from 8" to 17"



TS-08

Thanks to its narrow shape, the **TS-08** is easy to handle and excels in reaching branches and trees in confined spaces.

The **TS-08** hydraulic tree shear is designed to trim and cut trees growing in tight spaces and near fences. Its slim design lets you cut trees and branches up to 8" (20 cm) in diameter almost anywhere. It can also be used with small farm tractors, Skid Steer loaders and telehandlers to give you even more versatility.

SPECIFICATIONS

Length	67" (170 cm)
Width	21" (53 cm)
Tree Cutting Power	85,000 lb @ 3000 PSI / 38,000 kg @ 206 bars
Rotation	0 to 100°
Blade	RT-400 steel
Valve	Solenoid 2 functions 1 command
Hydraulic Outlets	1
Minimum Oil Flow	12 GPM @ 2200 PSI / 45.5 l/m @ 151 bars 35 GPM @ 5000 PSI / 132 l/m @ 344 bars

TS-08

MODEL	DESCRIPTION	WEIGHT
TS-08	Tree Shear 8" (20 cm) Universal back	1050 lb (476 kg)
TS-08 SS	Tree Shear 8" (20 cm) Skid Steer back	1124 lb (510 kg)

TS-08

Caterpillar electrical connector kit (Cat Plug)



TS-17

The powerful **TS-17** tree shear is Fabrication SHoule's rugged double bladed model. With this tree shear you can easily cut trees up to 17 inches in diameter, at ground level if needed. The replaceable and adjustable steel blades pivot on MOS-2 polyethylene bushings and all pivot points are greaseable. A shield provides increased protection for the hydraulic hoses. Designed for Skid Steer loaders and telehandlers.

SPECIFICATIONS

Length	79" (201 cm)
Width	44" (112 cm)
Tree Cutting Power	85,000 lb @ 3000 PSI / 38,000 kg @ 206 bars
Rotation	None (flat to ground)
Blade	RT-400 steel
Valve	Solenoid 2 functions 1 command
Minimum Oil Flow	12 GPM @ 2200 PSI / 45.5 l/m @ 151 bars 35 GPM @ 5000 PSI / 132 l/m @ 344 bars

TS-17

MODEL	DESCRIPTION	WEIGHT
TS-17	Tree Shear 17" (67 cm) Double blade system	1675 lb (760 kg)



TS-10+ and TS-16+

Tree Shear for diameters from 10" to 16" - for excavators from 9500 lb to 15 000 lb

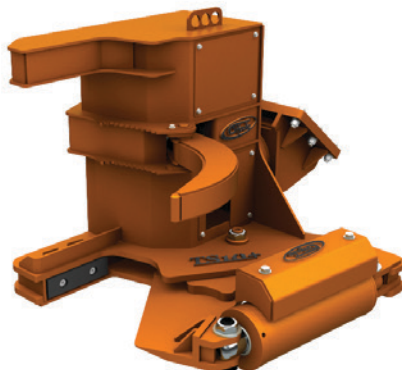


TS-10+

The **TS-10+** model hydraulic tree shear is ideal for cutting branches or small trees up to 10" (25 cm) in diameter. Its grapple helps to gain access and handle trees in tight spots. Designed to adapt on mini-excavators or Skid Steer loaders.

SPECIFICATIONS	
Length	36" (201 cm)
Width	31" (80 cm)
Tree Cutting Power	85,000 lb @ 3000 PSI / 38,000 kg @ 206 bars
Rotation	0 to 90° on Universal model No rotation on Skid Steer model
Blade	RT-400 steel
Valve	Solenoid 2 functions 1 command
Hydraulic Outlets	1
Minimum Oil Flow	15-20 GPM @ 3000 PSI / 70-90 l/m @ 206 bars

TS-10+		
MODEL	DESCRIPTION	WEIGHT
TS-10+	Tree Shear 10" (25 cm) Universal attachment (to be added)	900 lb (408 kg)
TS-10+ SS	Tree Shear 17" (25 cm) Skid Steer back	900 lb (408 kg)



TS-16+

The **TS-16+** model hydraulic shear is ideal for cutting trees up to 16" (41 cm) in diameter. Its two gripping arms make it possible to hold onto and maneuver the trees as desired. Its sturdy construction allows it to handle the most grueling chores. This shear is designed to adapt on excavators.

SPECIFICATIONS	
Length	66" (167 cm)
Width	61" (155 cm)
Tree Cutting Power	132,500 lb @ 3000 PSI / 60,100 kg @ 206 bars
Rotation	-20° to +20°
Blade	RT-400 steel
Minimum Oil Flow	30 GPM @ 3000 PSI / 113.5 l/min @ 206 bars

TS-16+		
MODEL	DESCRIPTION	WEIGHT
TS-16+	Tree Shear 16" (41 cm) Universal attachment (to be added)	3290 lb (1492 kg)





Nothing compares...

Designer expertise combined with field experience. Twenty-five years of finesse and unstoppable strength. The best value package on the market.

That's why they're preferred by the biggest names in the industry and why they continue to grow in popularity.

SHoule agricultural equipment is built to last.

www.shoule.com | 1 888 ■ 404 ■ 4380



www.facebook.com/shouleinc

SHoule Inc.

300, Industriel Blvd.
St-Germain, QC J0C 1K0
Phone : 819-395-4380
Fax : 819-395-5516
info@shoule.com

